

**Table 1
Comparison of 2007 Big Dry Creek Data to Stream Standards**

Parameter		Stream Standard	Unit	# of Instream Samples ¹	# of Exceedances ³	Does 85th (or 50th) Percentile Value for 2005 Exceed Standard? ⁴	% Occurrence of Exceedances	# Sample Days Standard Exceeded	Comment
Physical and Biological									
DO		5	mg/L	92	0	no	0%	0	
pH		6.5-9.0	SU	92	1	no	1%	1	On 11/8/07, pH = 6.1 at bdc1.0
Temperature	chronic	30	C	92	0	no	0%	0	Interim standard until Basin-wide rulemaking hearing in June 2009.
Fecal Coliform	(Historic Basic Standard, Rec. Class 1b)	325	#/100mL	14	N/A	N/A	N/A	N/A	Fecal coliform has been dropped from the Basic Standards (Reg. 31), but still appears in Reg. 38 for Big Dry Creek. BDCWA stopped monitoring fecal coliform early in 2007.
E. Coli	(Basic Standard, Rec. Class 1b)	205	#/100mL	92	51	yes	55%	11	On 6/14/07, 7/12/07, 8/9/07, 9/13/07, 10/11/07 at most locations. At a few locations on 2/8/07, 3/15/07, 4/12/07, 5/10/07, 11/8/07, 12/13/07.
Ammonia	acute	TVS	mg/L	92	0	no	0%	0	"Old" standard in place until 12/31/2011
Ammonia	chronic	0.1	mg/L	92	0	no	0%	0	"Old" standard in place until 12/31/2011
Chlorine	acute	0.019	mg/L	0	N/A	N/A	N/A	N/A	
Chlorine	chronic	0.011	mg/L	0	N/A	N/A	N/A	N/A	
Cyanide		0.005	mg/L	30	0	no	0%	0	
Sulfide		0.002	mg/L	0	N/A	N/A	N/A	N/A	
Boron		0.75	mg/L	92	0	no	0%	0	
Nitrite		4.5	mg/L	92	0	no	0%	0	
Metals (Dissolved unless otherwise noted)²									
Arsenic (Trec)	Acute	100	µg/L	30	0	no	0%	0	
Beryllium	chronic	100	µg/L	0	N/A	N/A	N/A	N/A	
Cadmium	Acute	12	µg/L	30	0	no	0%	0	
Cadmium	Chronic	4.5	µg/L	30	0	no	0%	0	Half of samples were below detection limits.
Chromium III	Acute	1230	µg/L	30	0	no	0%	0	
Chromium III	Chronic	160	µg/L	30	0	no	0%	0	
Chromium VI	Acute	16	µg/L	30	0	no	0%	0	
Chromium VI	Chronic	11	µg/L	30	0	no	0%	0	
Copper	Acute	33	µg/L	30	0	no	0%	0	
Copper	Chronic	20	µg/L	30	0	no	0%	0	
Iron (Trec)	Chronic	1000	µg/L	92	27	no	29%	9	On 2/8/07, 5/10/07 and 9/13/07 at most locations. At a few locations on 1/10/07, 6/14/07, 7/12/07, 8/9/07, 10/11/07, 12/13/07.
Lead	Acute	177	µg/L	30	0	no	0%	0	
Lead	Chronic	6.9	µg/L	30	0	no	0%	0	All samples were below detection limits.
Mercury (tot)	Acute	0.01	µg/L	30	0	See note	See note	See note	All samples were below detection limits.
Manganese	Acute	4083	µg/L	30	0	no	0%	0	
Manganese	Chronic	2256	µg/L	30	0	no	0%	0	
Nickel	Acute	1037	µg/L	30	0	no	0%	0	
Nickel	Chronic	115	µg/L	30	0	no	0%	0	
Selenium (Irrigated)	Acute	18.4	µg/L	92	0	no	0%	0	
Selenium (Irrigated)	Chronic	7.4	µg/L	92	6	yes	7%	3	Exceeds chronic on 8/9/07 at bdc1.5; on 10/11/07 at bdc1.5, bdc2.0, bdc4.0, and bdc5.0; on 4/12/07 at bdc5.0; 85th percentile @ bdc1.5, 2.0 and 4.0 = 0.0079 mg/L; however, attainment would be based on 5 yrs of data.
Selenium (Non-irrigated)	Acute	19.1	µg/L	92	0	no	0%	0	
Selenium (Non-irrigated)	Chronic	15.0	µg/L	92	2	no	2%	2	On 11/8/07 and 12/13/07 at bdc1.5.
Silver	Acute	10	µg/L	30	0	no	0%	0	
Silver	Chronic	1.6	µg/L	30	0	no	0%	0	Only 2 out of 30 values above detection limits.
Zinc	Acute	260	µg/L	30	0	no	0%	0	
Zinc	Chronic	262	µg/L	30	0	no	0%	0	

¹Based on data collected at all in-stream sampling locations along Segment 1 of Big Dry Creek.

²Hardness value of 256 mg/L used to calculate table value standards based on the hardness value used by CDPHE in calculating effluent limits for the cities of Broomfield and Westminster. A hardness value of 337 mg/L was used by CDPHE for the city of Northglenn. Actual mean hardness for the stream during 2007 was 390 mg/L.

³Includes multiple exceedances that occurred on the same day at different stations for some parameters.

⁴The 85th percentile value is used by the CWQCD to assess whether streams attain most water quality standards. The 50th percentile value is used for metals with standards in the total form. Geometric means are used for e. coli/fecal coliform. For regulatory purposes, the last five years of data would be included in calculating the 85th and 50th percentile values.

Table 2.
2007 Big Dry Creek Data Instream Summary Statistics

Analyte	Units	Number of Samples	Mean	Max	Min	St. Dev	85th%	50th %	15th%
ALKALINITY	mg/L	92	163.7	326.0	56.0	58.1	222.7	160.0	113.7
AMMONIA, CALCULATED UNIONIZED	mg/L	92	0.004	0.038	Non-detect	0.008	0.008	0.001	0.000
ARSENIC Tot. Rec.	mg/L	30	0.00123	0.00280	0.00070	0.00052	0.00187	0.00100	0.00080
ARSENIC, D	mg/L	30	0.00075	0.00200	Non-detect	0.00041	0.00100	0.00070	0.00037
BOD	mg/L	92	3.1	8.5	Non-detect	1.9	5.1	2.9	1.0
BORON	mg/L	92	0.21	0.37	Non-detect	0.09	0.31	0.22	0.10
CADMIUM, D	mg/L	30	0.00005	0.00020	Non-detect	0.00004	0.00010	0.00002	0.00002
CALCIUM	mg/L	92	107.4	186.0	33.6	32.4	134.7	109.0	74.0
CHLORIDE	mg/L	92	158.6	859.0	23.6	140.6	249.5	98.0	64.6
CHLOROPHYLL-a	ug/L	92	11.7	54.5	2.2	10.5	19.1	8.1	4.3
CHLOROPHYLL-a, corrected	ug/L	92	9.5	48.9	Non-detect	9.7	16.4	5.9	2.7
CHROMIUM, D	mg/L	30	0.0010	0.0045	Non-detect	0.0014	0.0030	0.0002	0.0001
COLIFORM, FECAL	#/100 mL	14	N/A	N/A	N/A	N/A	N/A	N/A	N/A
CONDUCTANCE, SPECIFIC	us/cm	92	1387	4149	270	631	1954	1360	828
COPPER, D	mg/L	30	0.0097	0.0170	0.0032	0.0042	0.0150	0.0092	0.0052
CYANIDE	mg/L	30	0.002	0.005	Non-detect	0.001	0.002	0.002	0.002
DO	mg/L	92	9.5	14.1	5.6	1.7	11.5	9.3	7.8
E. COLI (geometric mean reported)	#/100 mL	92	241	>2419	11	584	991	254	67
FLOW (cfs)	mg/L	42	13.3	52.2	1.1	12.0	22.0	10.1	3.7
HARDNESS	mg/L	92	389.7	730.2	107.9	129.1	506.9	391.2	271.8
IRON, D	mg/L	92	0.021	0.057	0.005	0.012	0.032	0.018	0.012
IRON, Tot. Rec.	mg/L	92	0.885	7.268	0.026	0.992	1.317	0.611	0.237
LEAD, D	mg/L	30	Non-detect	Non-detect	Non-detect	N/A	N/A	N/A	N/A
MAGNESIUM, D	mg/L	92	29.5	73.1	5.9	12.3	38.6	29.1	18.3
MANGANESE , D	mg/L	30	0.1592	1.2000	0.0070	0.2481	0.3150	0.0510	0.0130
MERCURY	mg/L	30	Non-detect	Non-detect	Non-detect	N/A	N/A	N/A	N/A
MOLYBDENUM, D	mg/L	30	0.005	0.008	0.003	0.002	0.007	0.004	0.004
NICKEL, D	mg/L	30	0.004	0.009	Non-detect	0.003	0.008	0.002	0.001
NITROGEN, AMMONIA	mg/L	92	0.353	5.970	Non-detect	0.789	0.614	0.095	0.020
NITROGEN, NITRITE	mg/L	92	0.103	0.618	Non-detect	0.130	0.236	0.037	0.008
NITROGEN, NO3+NO2	mg/L	92	4.70	13.20	0.05	3.89	9.51	3.98	0.39
pH	SU	92	7.76	8.30	6.10	0.35	8.07	7.81	7.50
PHOSPHORUS, TPO4 (Hach)	mg/L	92	1.01	3.31	0.09	0.84	1.96	0.97	0.14
PHOSPHORUS, ORTHOPHOSPHATE as P, D	mg/L	92	0.71	2.52	0.00	0.68	1.51	0.67	0.01
POTASSIUM, D	mg/L	92	6.41	11.51	1.94	2.55	9.27	6.45	3.68
SELENIUM, D	mg/L	92	0.0055	0.017	Non-detect	0.0030	0.0076	0.0055	0.0030
Selenium, D (irrigation season @ bdc1.5, 2.0, 4.0)	mg/L	21	N/A	0.0150	N/A	N/A	0.0079	N/A	N/A
Selenium, D (non-irrigation season@ bdc1.5, 2.0 4.0)	mg/L	13	N/A	0.0160 (95th %)	N/A	N/A	0.0110	N/A	N/A
SILVER, D	mg/L	30	Non-detect	0.00001	Non-detect	N/A	Non-detect	Non-detect	Non-detect
SODIUM, D	mg/L	92	178.4	754.5	16.8	124.6	266.7	160.7	67.8
SULFATE	mg/L	92	300.7	655.3	44.8	133.5	420.6	299.7	171.0
TDS	mg/L	92	909	2752	154	431	1317	891	519
TEMPERATURE	C	92	11.8	22.9	-0.1	6.7	19.6	11.5	4.2
TOC	mg/L	92	6.7	9.9	2.0	1.9	8.4	7.2	5.2
TSS	mg/L	92	46.3	470.0	Non-detect	64.0	63.1	29.0	13.7
TURBIDITY	NTU	92	35.9	338.0	2.3	47.2	55.8	22.3	10.5
ZINC, D	mg/L	30	0.0148	0.0430	Non-detect	0.0137	0.0330	0.0095	0.0014

Notes: D=dissolved; values below detection limits replaced with one-half of the detection limit to calculate statistics.

Table 3. QA QC Results

Trip Blank Results (mg/L, unless otherwise noted)

Station ID	Trip Start Date	ARSENIC, Tot Rec	ARSENIC, D	Boron, Total	CADMIUM, D	CALCIUM	CARBON, TOTAL ORGANIC	CHLORIDE	CHROMIUM, D	CONDUCTANCE, SPECIFIC	COPPER, D	Demand, Bio-Oxygen	DISSOLVED OXYGEN (DO)	E. coli (#/100 mL)	IRON, D	IRON, Tot Rec	LEAD, D	MAGNESIUM	MAN-GANESE, D
Trip Blank	15-Mar-07	*Non-detect	*Non-detect	*Non-detect	*Non-detect	0.2	0.1383	0.1	*Non-detect	5	0.0008	*Non-detect	6.82	*Non-detect	*Non-detect	0.0045	*Non-detect	*Non-detect	0.0008
Detection Limit		0.0002	0.0002	0.05	0.0004	1	0.1	0.43	0.0001		0.00008	2		1	0.006	0.0060	0.001	0.3	0.0002

Station ID	Trip Start Date	MOLYB-DENUM, D	NICKEL, D	Nitrogen, Ammonia	NITROGEN, NITRITE (NO2)	Nitrogen, NO3+NO2	PH	Phosphorous, TPO4 (Hach)	PHOSPHORUS, ORTHOPHOSPHATE AS P	POTASSIUM	SELENIUM, D	SILVER, D	SODIUM	TDS	TSS	SULFATE	TEMPERATURE, C	TURBIDITY (NTU)	ZINC, D
Trip Blank	15-Mar-07	*Non-detect	*Non-detect	*Non-detect	*Non-detect	0.03	9.32	0.06	0.00212	0.0132	*Non-detect	*Non-detect	0.1783	0	*Non-detect	0.97	14.64	0.25	*Non-detect
Detection Limit		0.0001	0.001	0.01	0.005	0.01		0.06	0.0025	0.03	0.0007	0.00004	1	2	2.6				0.001

Field Duplicate Results (mg/L, unless otherwise noted)

Station ID	Trip Start Date	Activity Category	CALCIUM	CARBON, TOTAL ORGANIC	CHLORIDE	CONDUCTANCE, SPECIFIC	DISSOLVED OXYGEN (DO)	MAGNESIUM	MERCURY	NITROGEN, NITRITE (NO2)	PHOSPHORUS, ORTHOPHOSPHATE AS P	POTASSIUM	SODIUM	SOLIDS, DISSOLVED	SULFATE	TURBIDITY
bdc5.0	13-Sep-07	Sample	115.6	5.5	82.43	1135	9.98	27.083	*Non-detect	0.0234	0.965	5.7	122.2	744	298	14.7
bdc5.0	13-Sep-07	Field Replicate	112.4	5.2	82.43	1135	9.98	27.016	*Non-detect	0.0232	0.973	5.7	121.9	734	299	15.0
Relative Percent Diff (%)			2.8%	6.2%	0.0%	0.0%	0.0%	0.2%	0.0%	0.9%	0.8%	0.2%	0.3%	1.4%	0.3%	2.0%

Station ID	Trip Start Date	Activity Category	ARSENIC, Tot. Rec.	ARSENIC, D	CADMIUM, D	CHROMIUM, D	COPPER, D	IRON, Tot Rec.	IRON, D	LEAD, D	MANGANESE, D	MOLYBDENUM, D	NICKEL, D	SELENIUM, D	SILVER, D	ZINC, D
bdc5.0	13-Sep-07	Sample	0.0015	0.002	0.0001	0.0001	0.0120	0.410	0.00976	*Non-detect	0.026	0.005	0.0026	0.0054	*Non-detect	0.012
bdc5.0	13-Sep-07	Field Replicate	0.0015	0.001	*Non-detect (Det. Limit = 0.00004)	0.0001	0.0077	0.453	0.00989	*Non-detect	0.021	0.0049	0.0020	0.0055	*Non-detect	0.012
Relative Percent Diff (%)			0.0%	66.7%	85.7%	0.0%	43.7%	9.9%	1.3%	0.0%	21.3%	2.0%	26.1%	1.8%	0.0%	0.0%
bdc1.5	14-Jun-07	Sample		*Non-detect	*Non-detect	*Non-detect	0.0091			*Non-detect	0.0096	0.0034	0.0011	0.0013	*Non-detect	*Non-detect
bdc1.5	14-Jun-07	Field Replicate		*Non-detect	*Non-detect	*Non-detect	0.0058			*Non-detect	0.01	0.0033	0.0012	0.0013	*Non-detect	*Non-detect
Relative Percent Diff (%)				0.0%	0.0%	0.0%	44.3%			0.0%	4.1%	3.0%	8.7%	0.0%	0.0%	0.0%
bdc1.5	13-Dec-07	Sample		0.0008	*Non-detect	0.0001	0.0089			*Non-detect	0.25	0.0038	0.002	0.016	*Non-detect	0.0026
bdc1.5	13-Dec-07	Field Replicate		0.0007	*Non-detect	0.0001	0.0087			*Non-detect	0.22	0.0037	0.002	0.016	*Non-detect	0.0026
Relative Percent Diff (%)				13.3%	0.0%	0.0%	2.3%			0.0%	12.8%	2.7%	0.0%	0.0%	0.0%	0.0%
bdc5.0	14-Jun-07	Sample						0.26								
bdc5.0	14-Jun-07	Field Replicate						0.62								
Relative Percent Diff (%)								82%								
bdc5.0	13-Dec-07	Sample						0.832								
bdc5.0	13-Dec-07	Field Replicate						1.420								
Relative Percent Diff (%)								52%								
Average Relative Percent Difference (%)				26.7%	28.6%	0.0%	30.1%	48.0%	1.3%	0.0%	12.7%	2.6%	11.6%	0.6%	0.0%	0.0%

Station ID	Trip Start Date	Activity Category	Nitrogen, Ammonia	Nitrogen, NO3+NO2	Station ID	Trip Start Date	Activity Category	E. coli (#/100 mL)
bdc3.0	14-Jun-07	Sample	0.13	7.75	bdc5.0	13-Sep-07	Sample	222
bdc3.0	14-Jun-07	Field Replicate	0.13	7.75	bdc5.0	13-Sep-07	Field Replicate	248
Relative Percent Diff (%)			0.0%	0.0%	Relative Percent Diff (%)			11%
bdc3.0	13-Dec-07	Sample	0.59	11.40	bdc2.0	6/14/2007	Sample	1414
bdc3.0	13-Dec-07	Field Replicate	0.55	12.20	bdc2.0	6/14/2007	Field Replicate	1120
Relative Percent Diff (%)			7.0%	6.8%	Relative Percent Diff (%)			23%
Average Relative Percent Difference (%)			3.5%	3.4%	Average Relative Percent Difference (%)			17.1%

Figure 1
Big Dry Creek Monitoring Locations

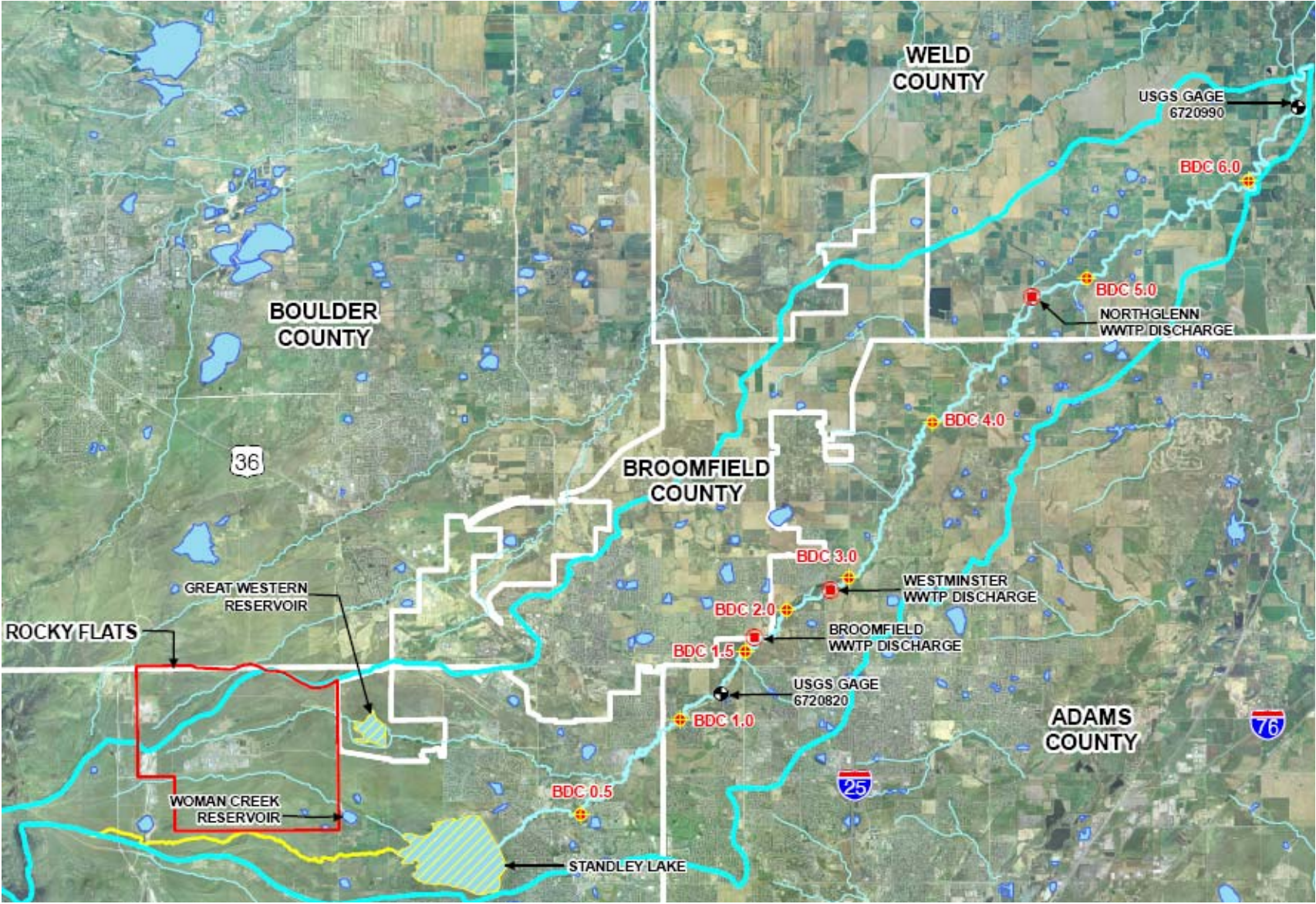


Figure 2
Big Dry Creek Average Hardness

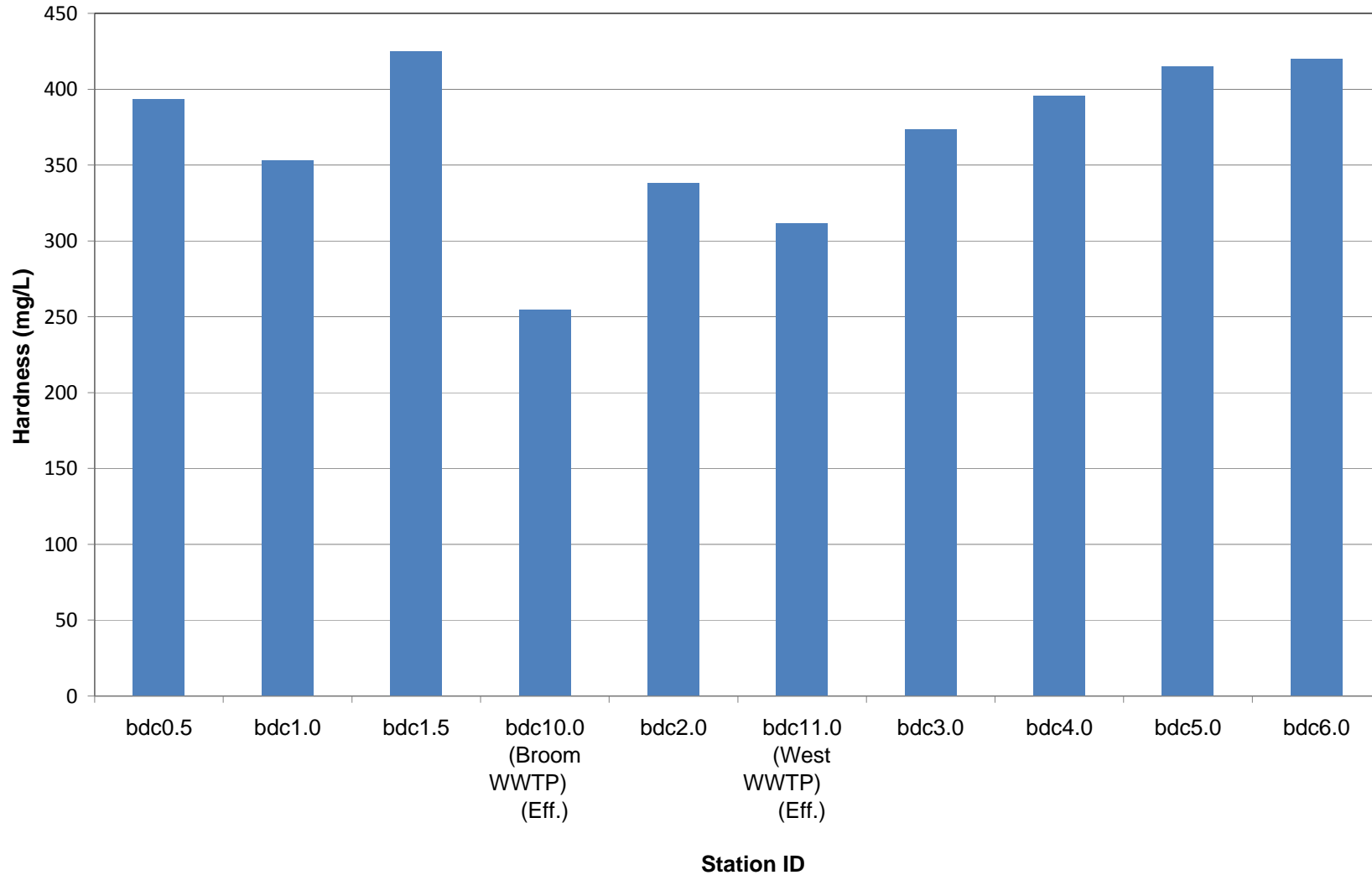


Figure 3
Big Dry Creek Average and 85th Percentile Values for Dissolved Selenium 2007

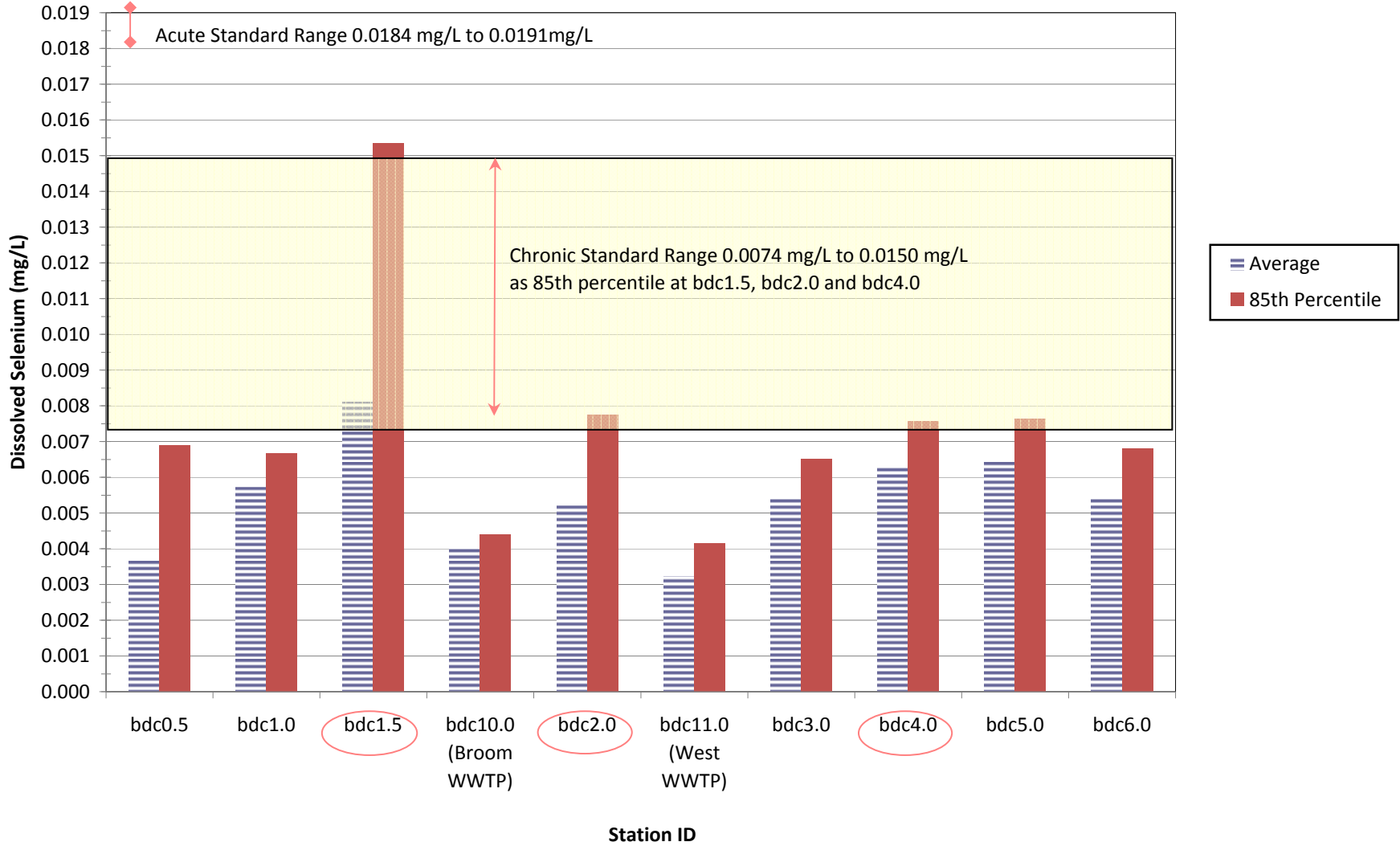


Figure 4a
2007 Dissolved Selenium (mg/L) During the Irrigation Season

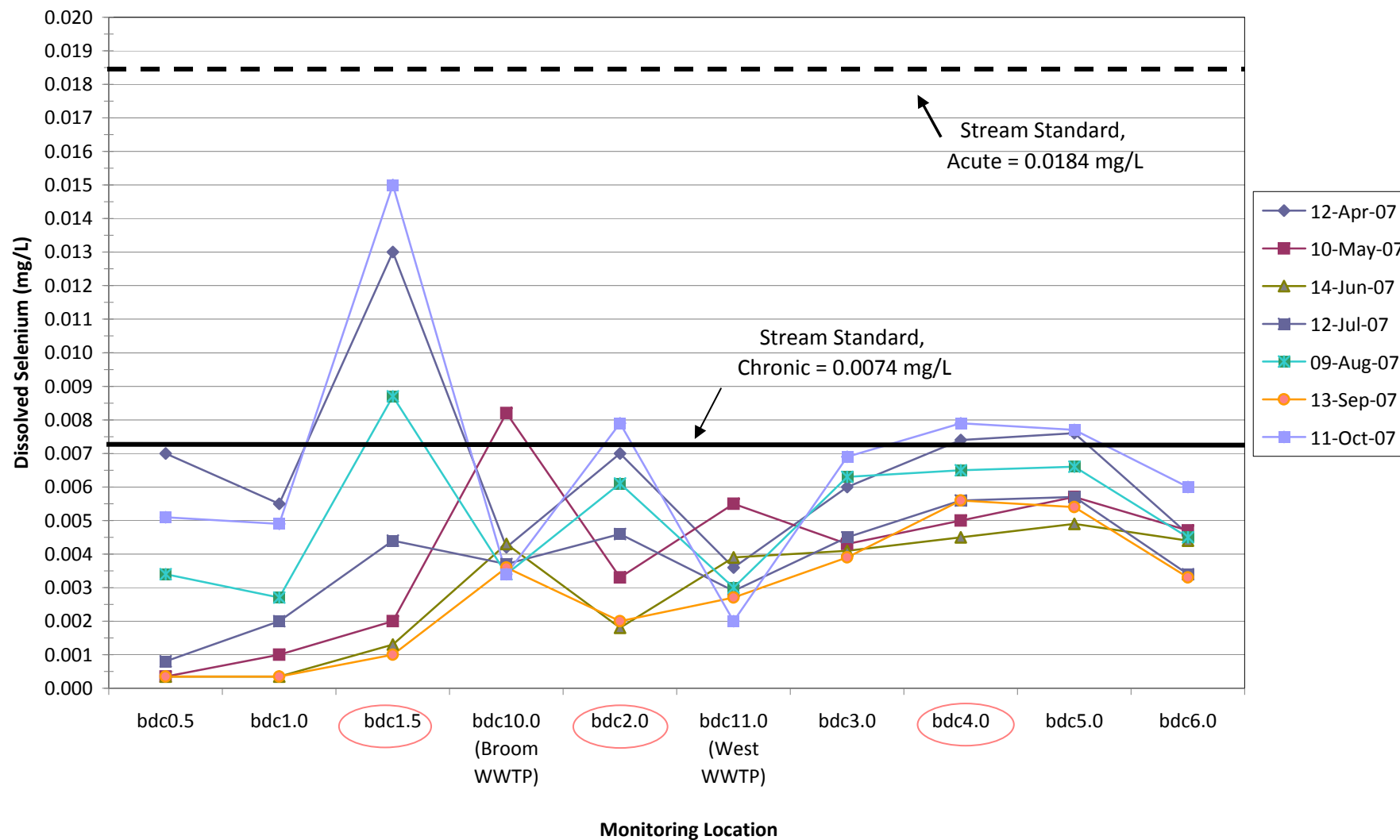


Figure 4b
2007 Dissolved Selenium (mg/L) During the Non-Irrigation Season

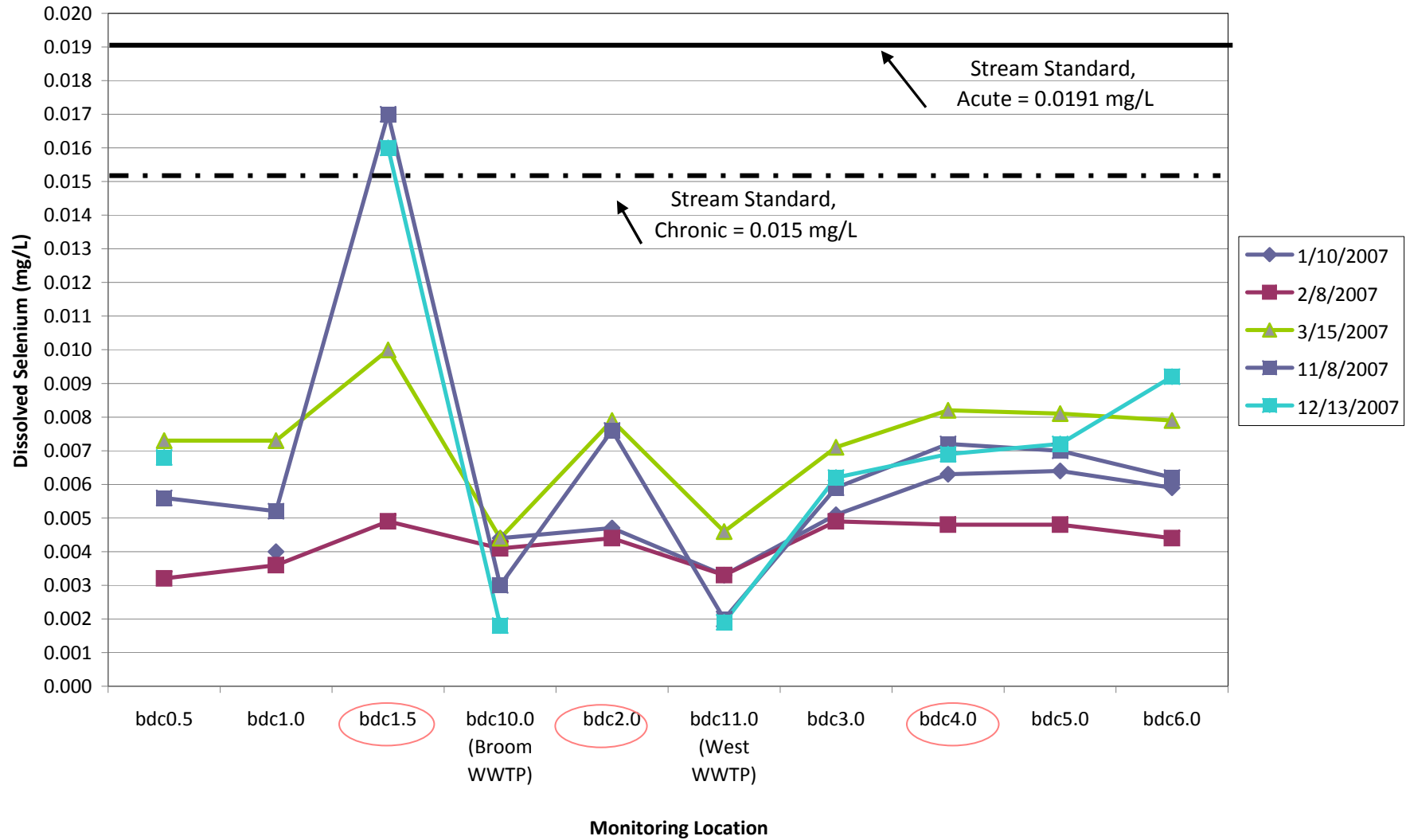


Figure 5. Big Dry Creek Monthly E. coli Grab Samples Geometric Means (2003-2007)

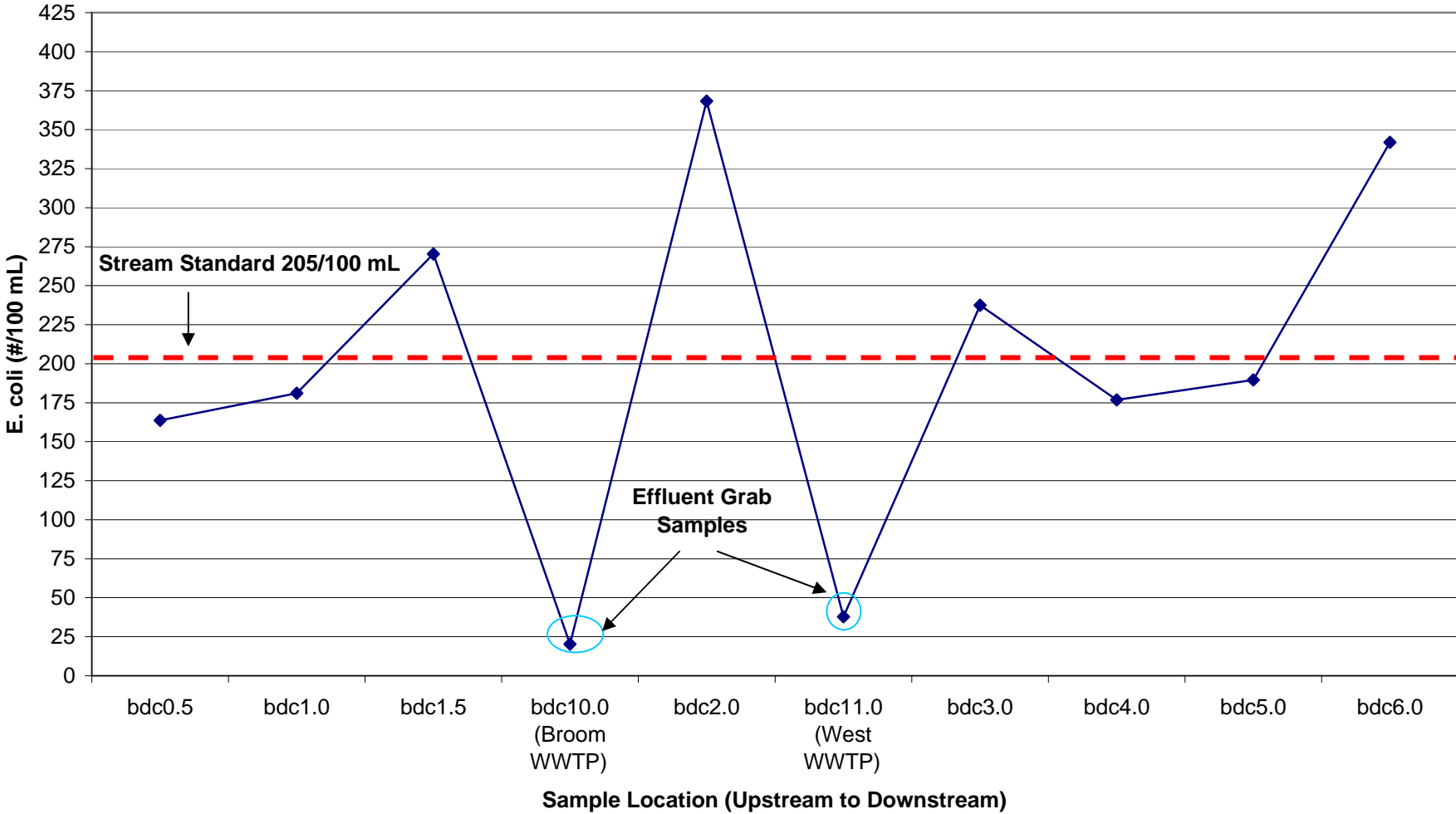


Figure 6. Geometric Mean E. coli Big Dry Creek (2003-2007)

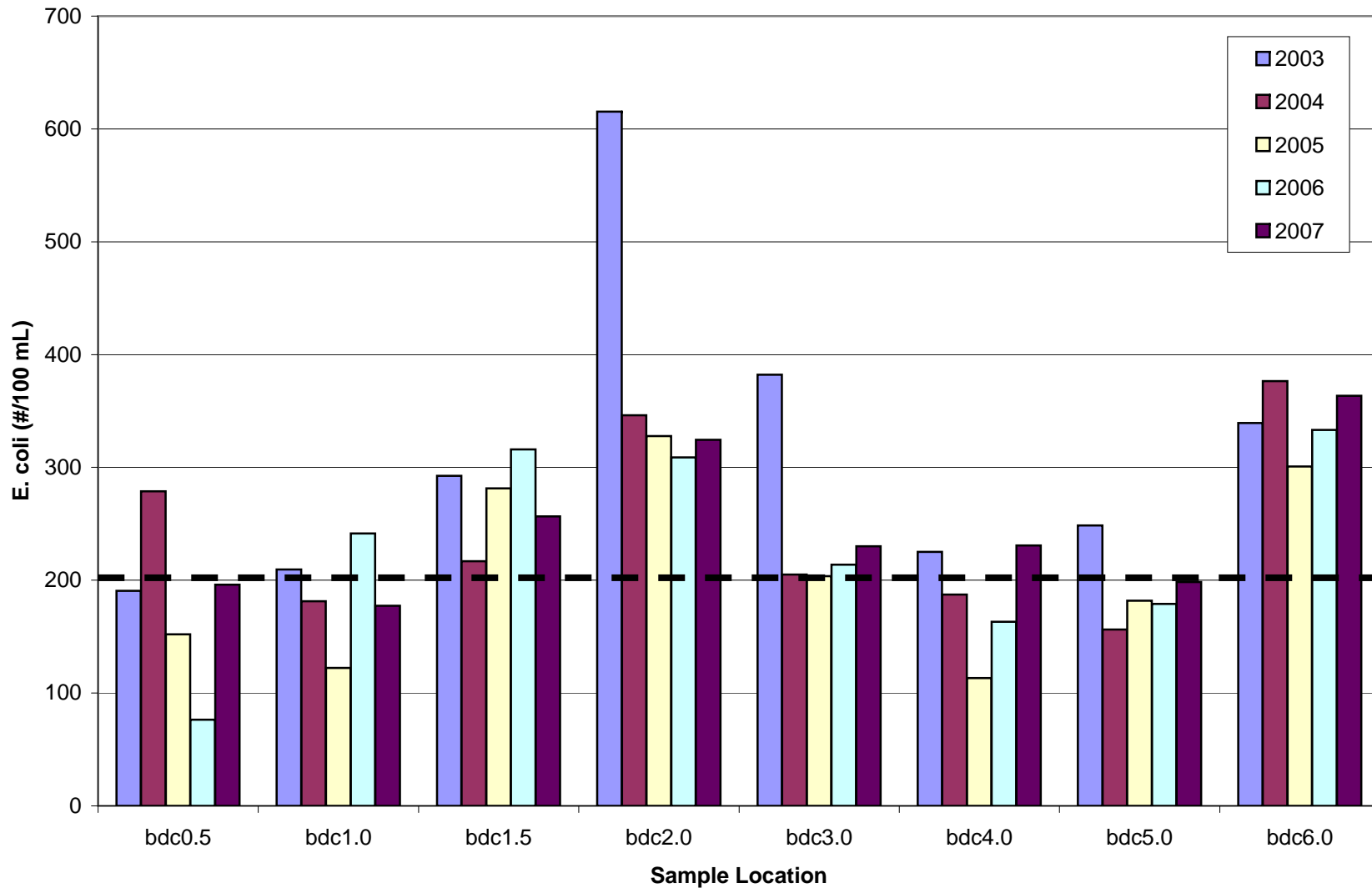


Figure 7. Monthly Geometric Mean E. coli at Big Dry Creek Instream Locations (2003-2007)

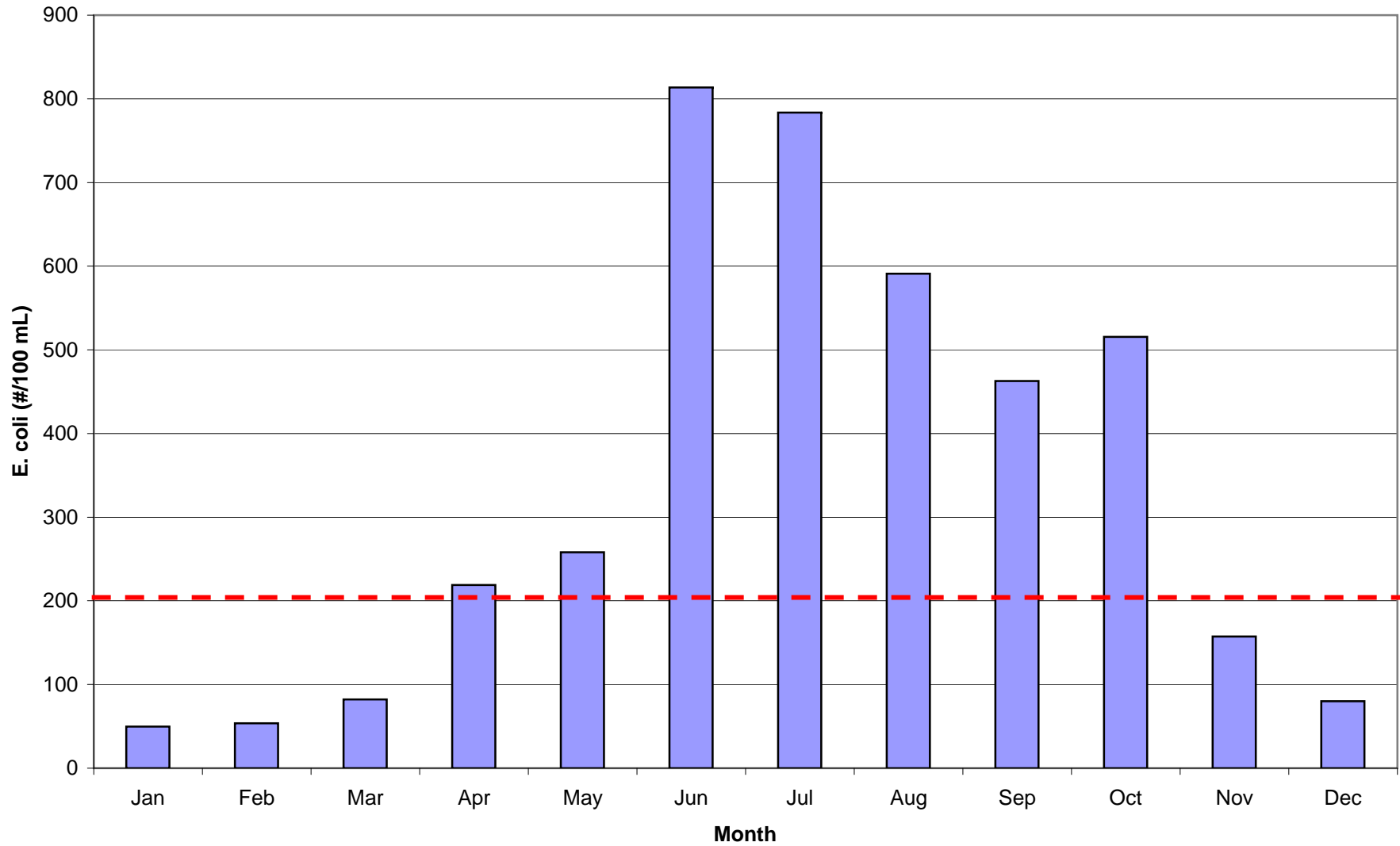


Figure 8
50th Percentile Values for Total Recoverable Iron 2007

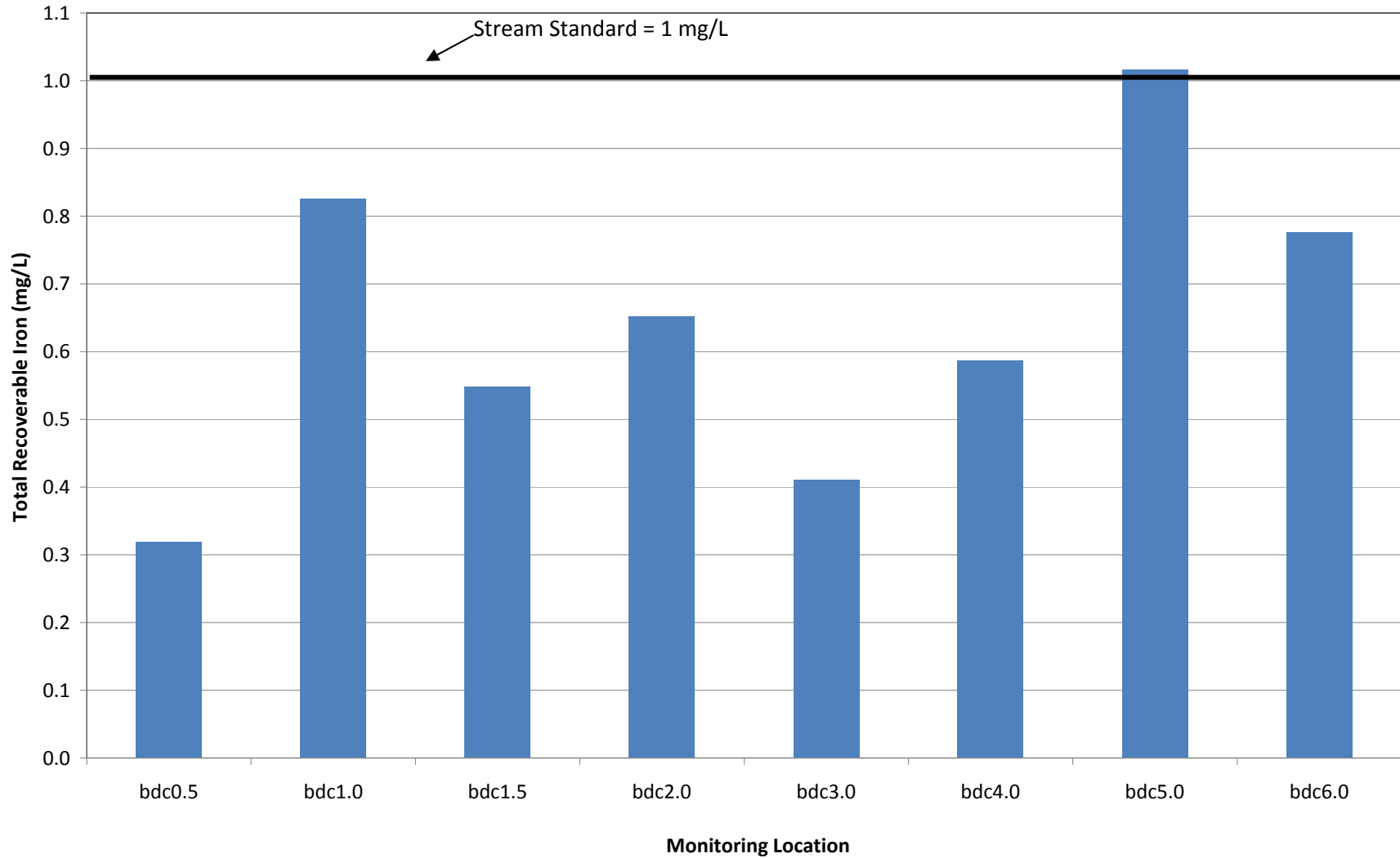


Figure 9
2007 Total Recoverable Iron by Date and Location

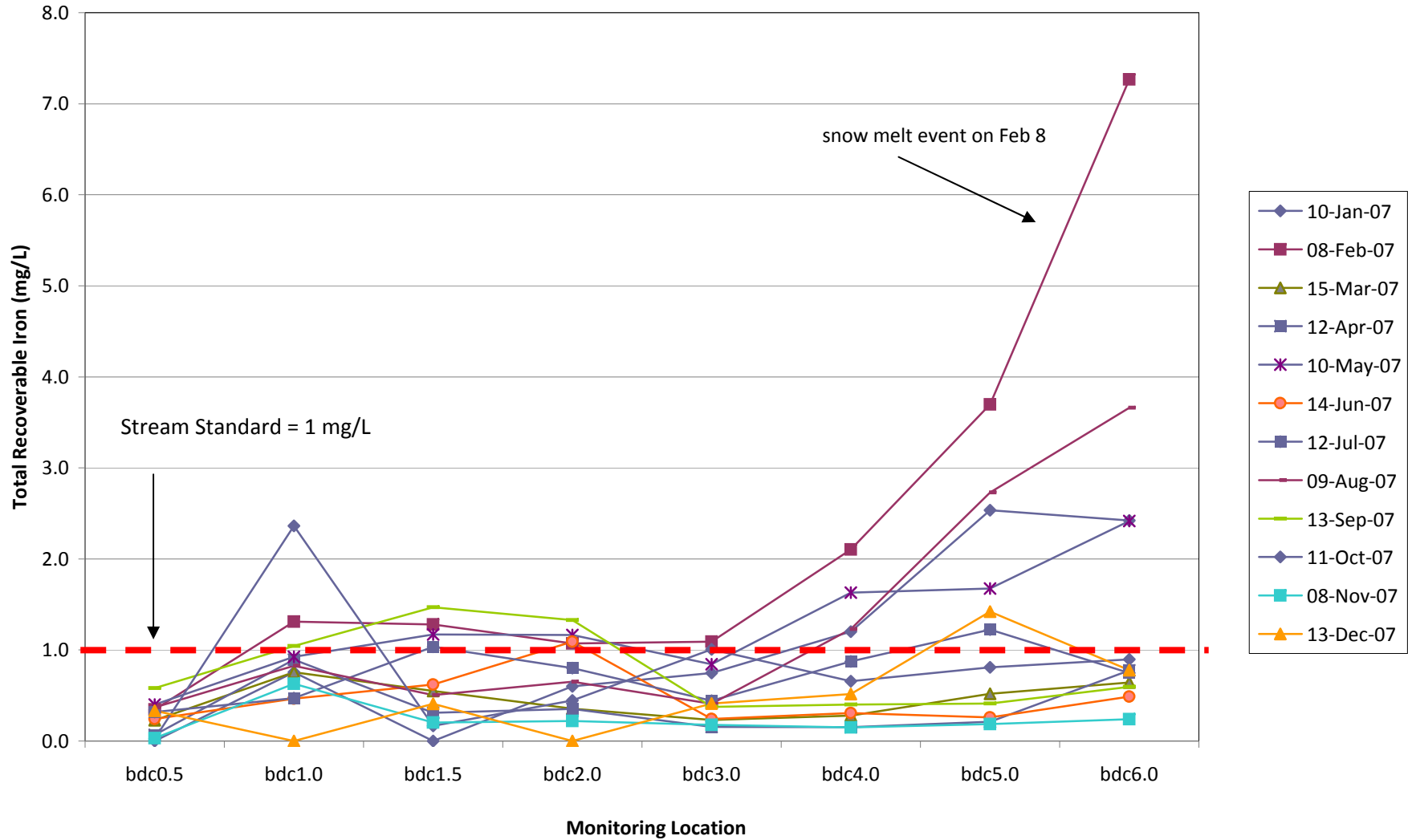


Figure 10
2007 Big Dry Creek Iron and TSS

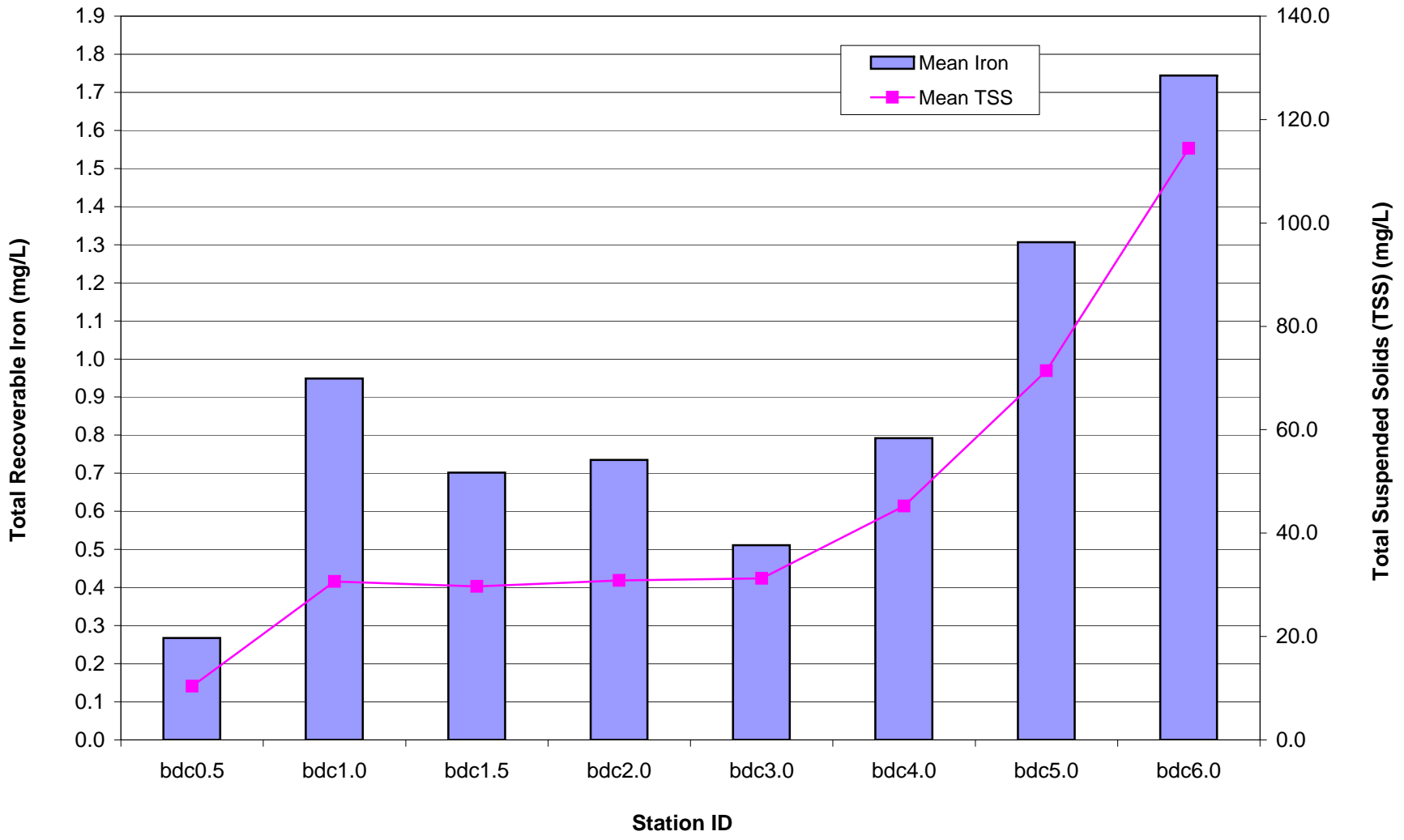


Figure 11
2007 Big Dry Creek Total Ammonia

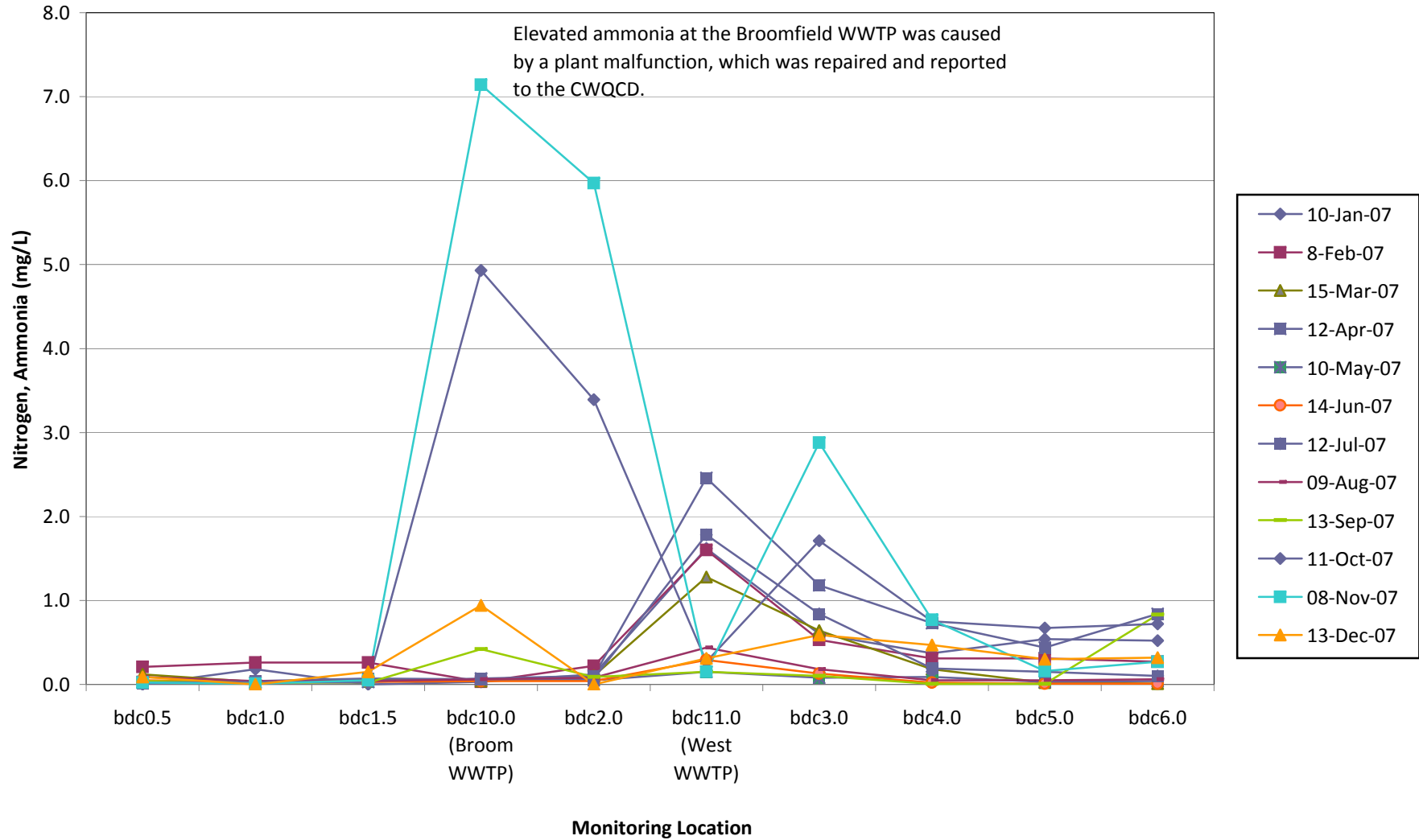


Figure 12
Big Dry Creek Unionized Ammonia 2007
(85th Percentile Values)

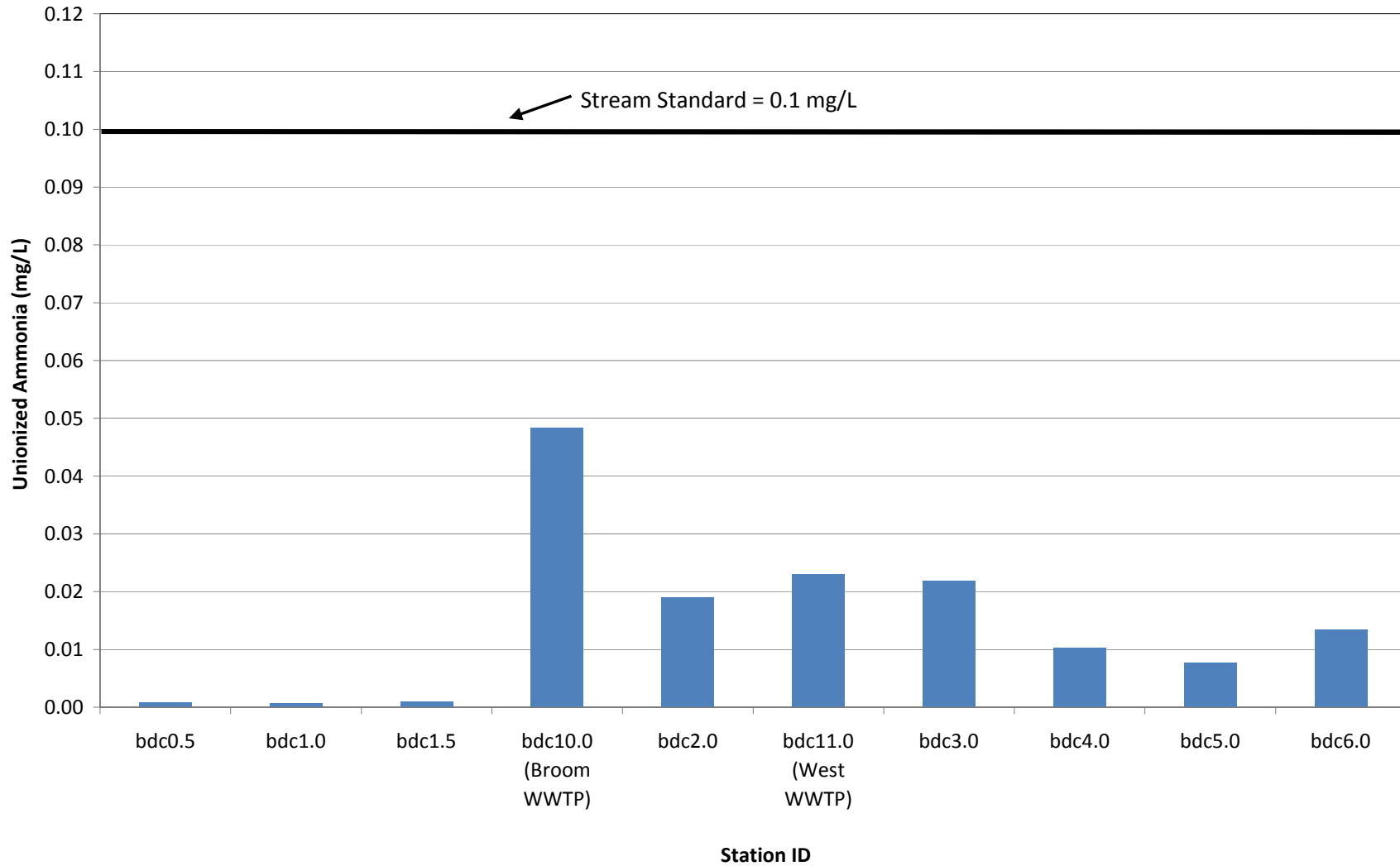


Figure 13
2007 Big Dry Creek Mean Nitrate Concentrations

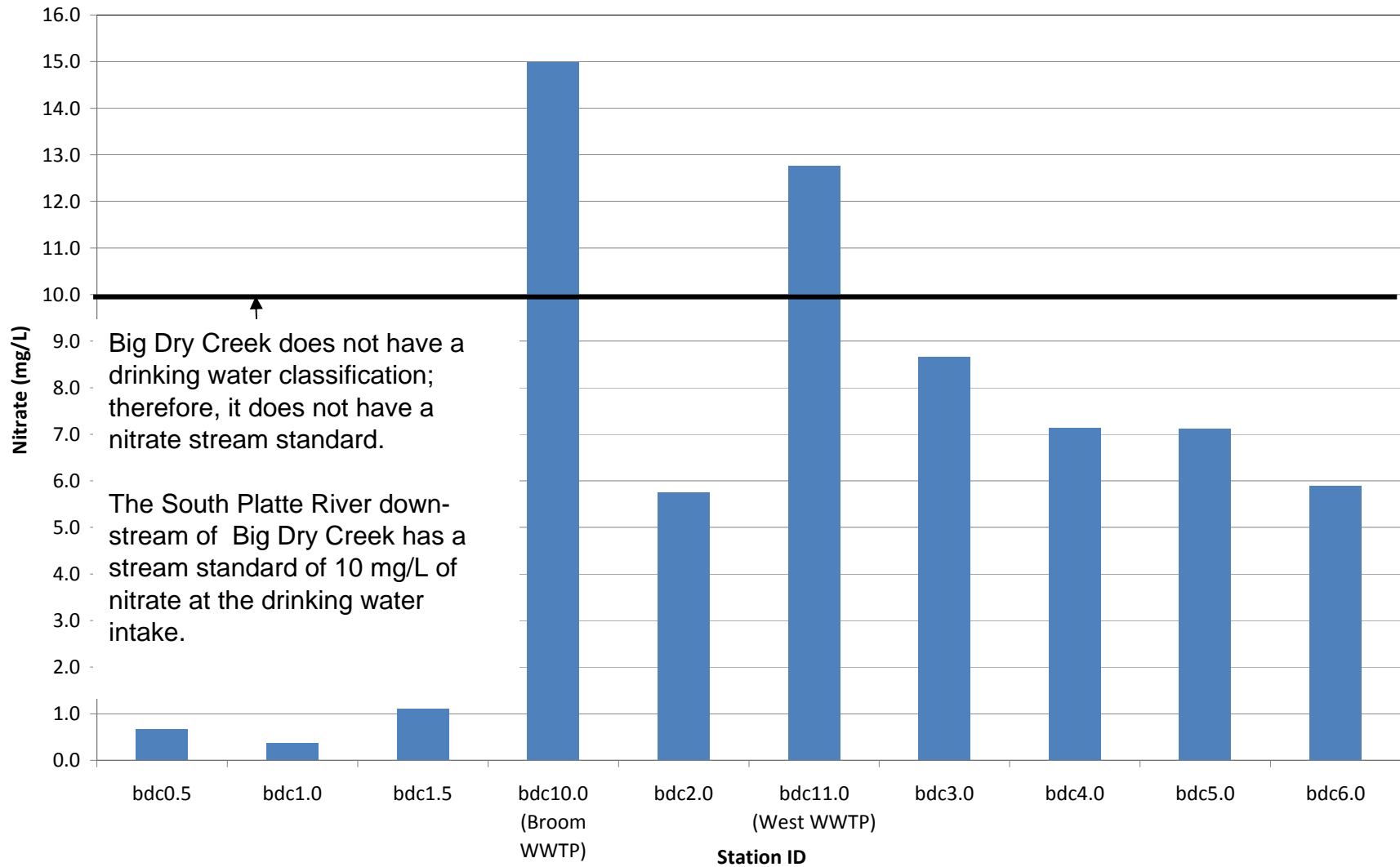


Figure 14
Big Dry Creek Phosphorus Samples Collected at bdc6.0 During 2007

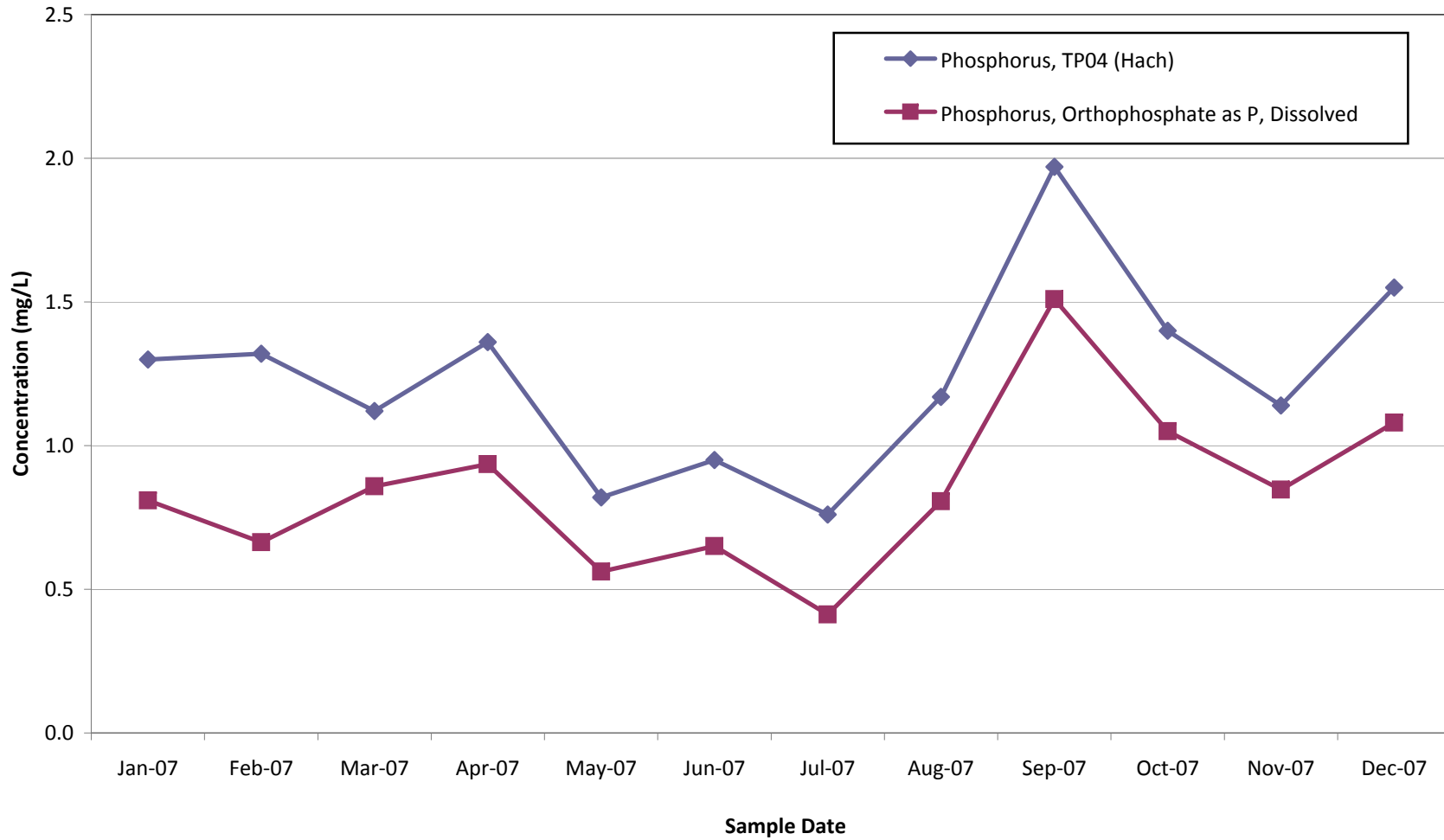
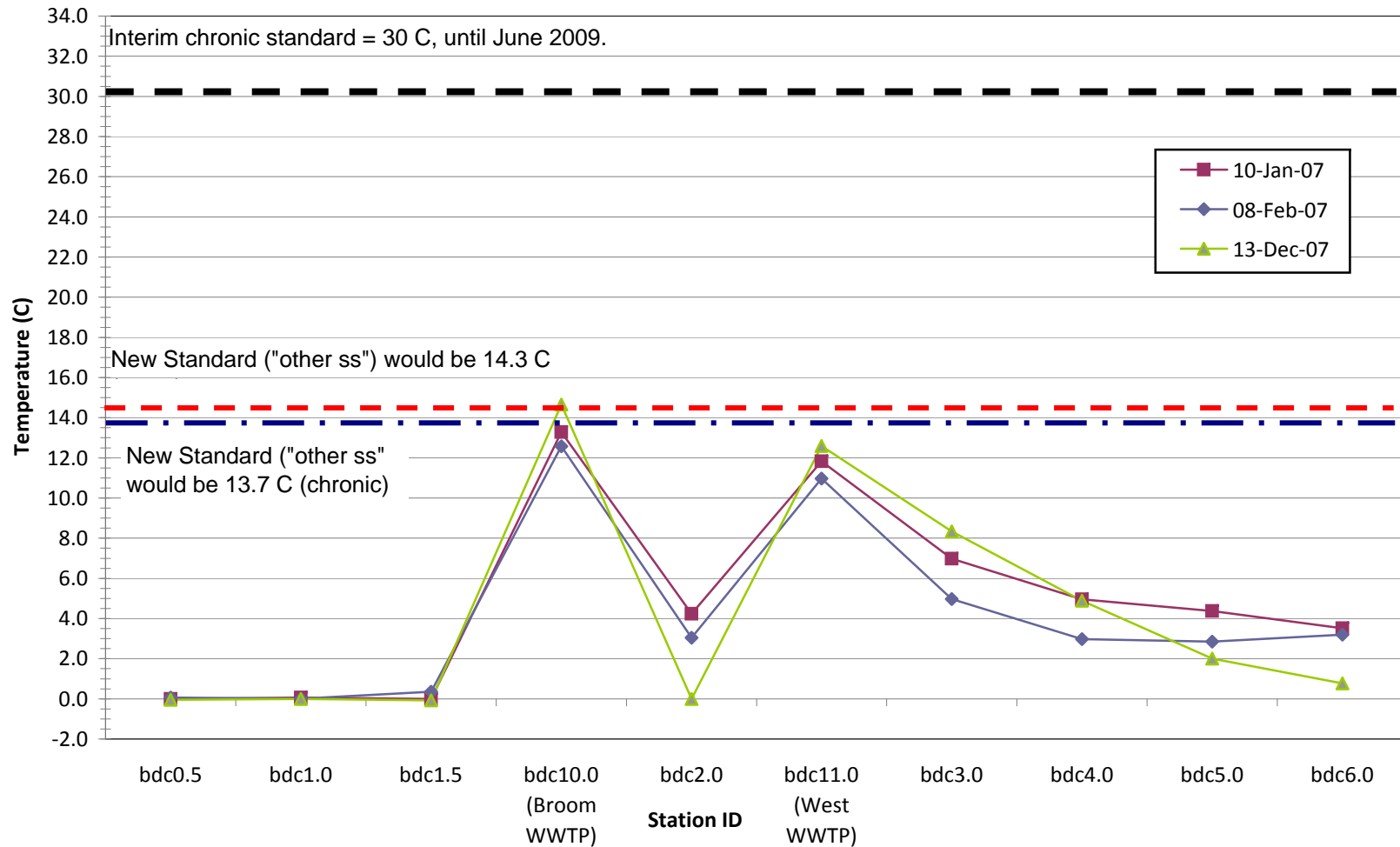
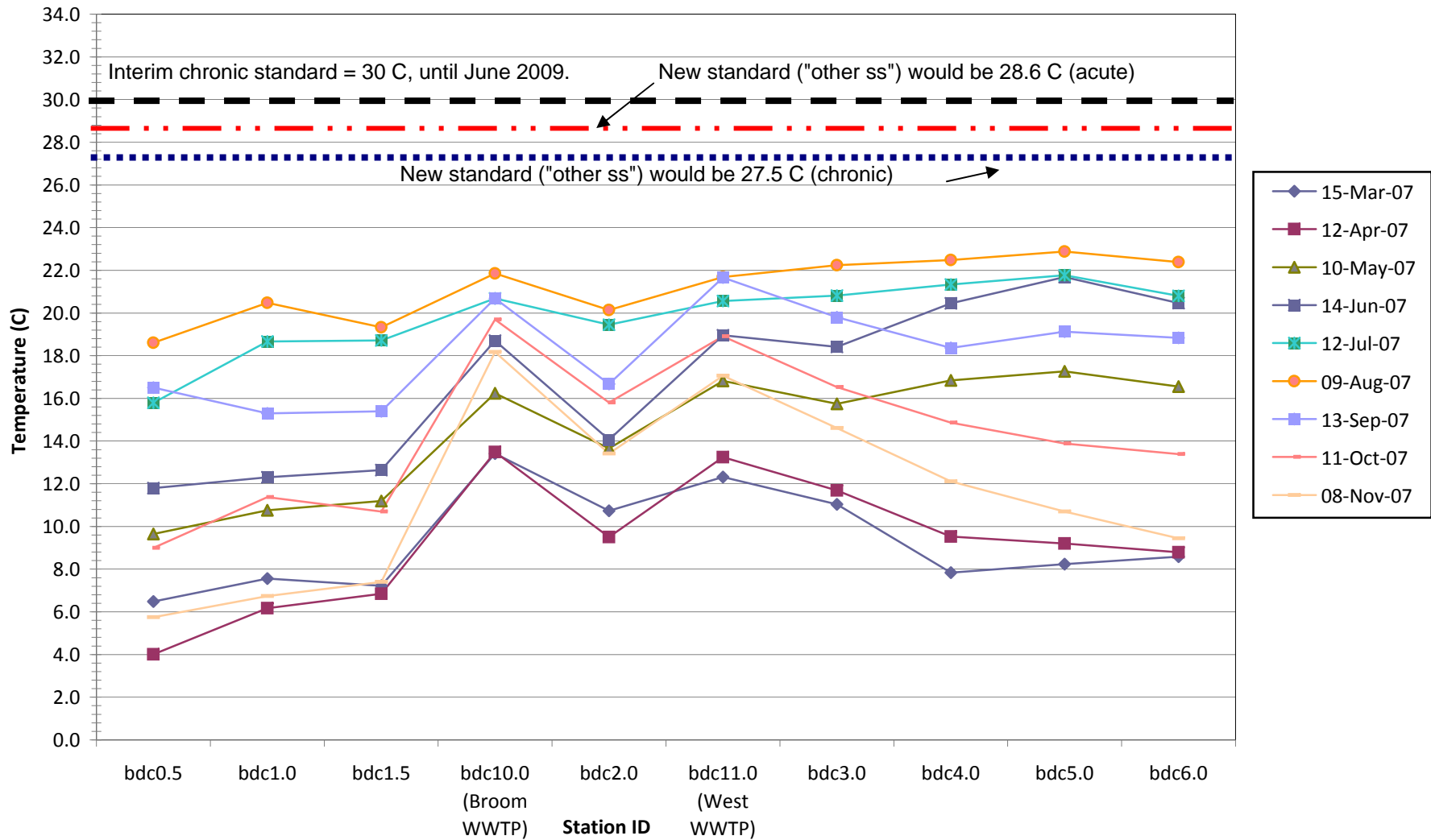


Figure 15
2007 Big Dry Creek Temperature Variation
(December-February)



New standards shown on plot assume that the "other ss" criteria would apply based on the known presence of the brook stickleback, creek chub, longnose dace and white sucker. (Note: Only one Johnny darter has been collected on Big Dry Creek since 2002; it was located at bdc1.0. Lower standards would apply if "cs, Jd, od" temperature standards were applied to Big Dry Creek.

Figure 16
2007 Big Dry Creek Temperature Variation
(March-November)



New standards shown on plot assume that the "other ss" criteria would apply based on the known presence of the brook stickleback, creek chub, longnose dace and white sucker. (Note: Only one Johnny darter has been collected on Big Dry Creek since 2002; it was located at bdc1.0. Lower standards would apply if "cs, Jd, od" temperature standards were applied to Big Dry Creek.

Figure 17a

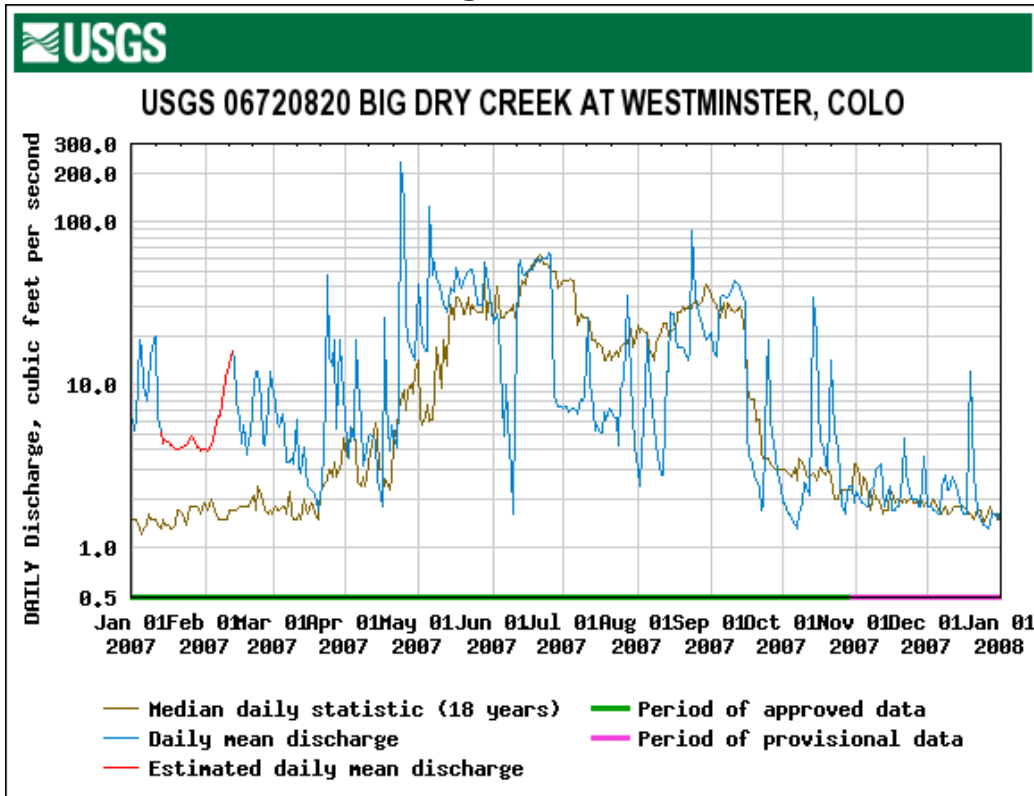
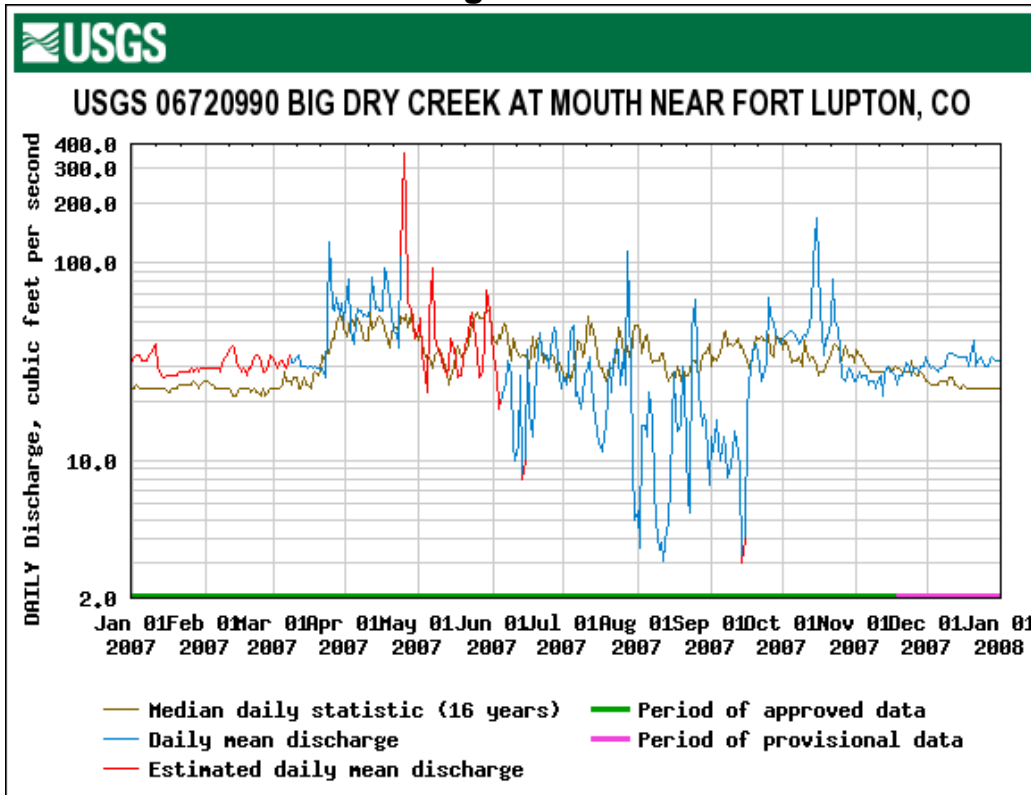
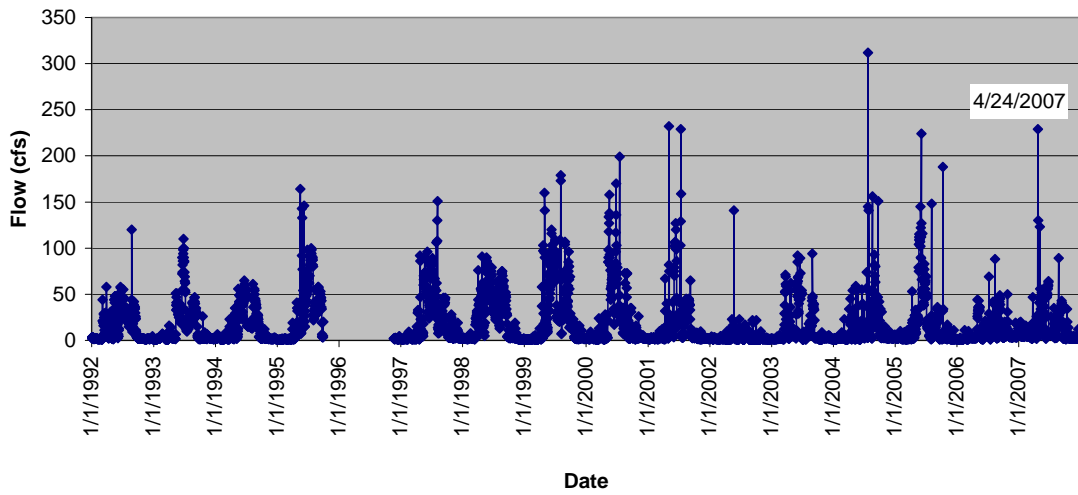


Figure 17b



**Figure 18a. Big Dry Creek Flows @ USGS Gage at Westminster
1992-2008**



**Figure 18b. Big Dry Creek Flows @ USGS Fort Lupton Gage
(1992-2008)**

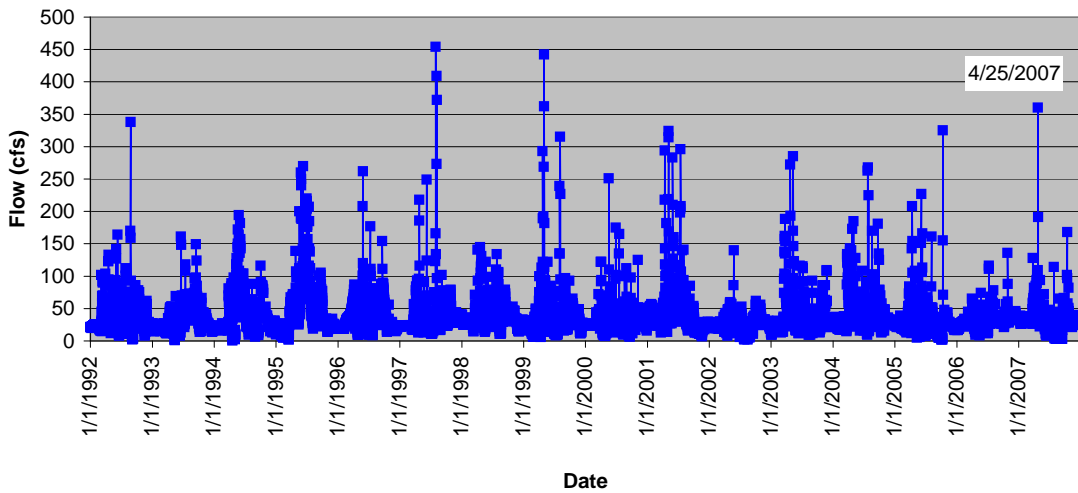


Figure 19. Standley Lake Releases to Big Dry Creek (1996-2005)

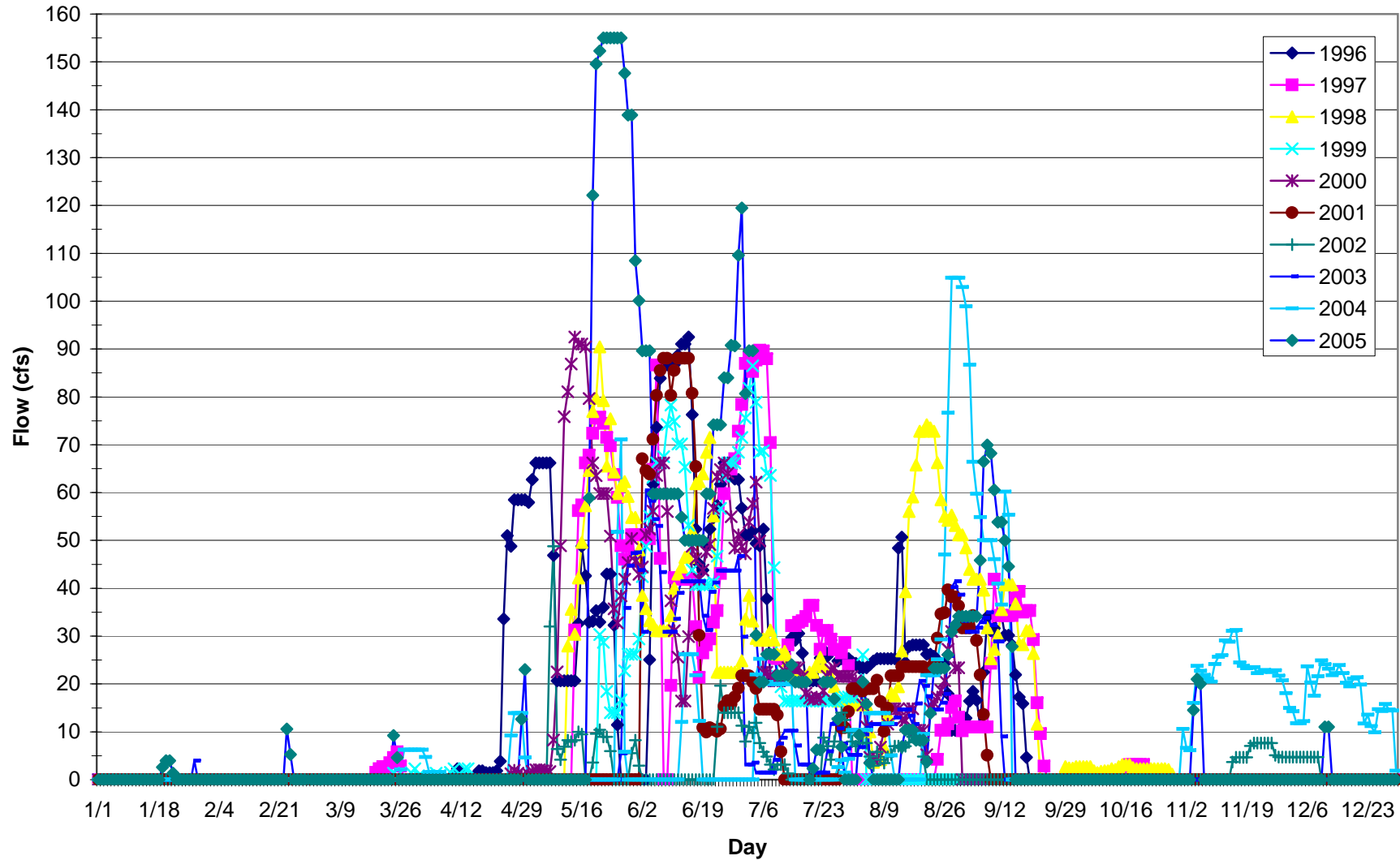
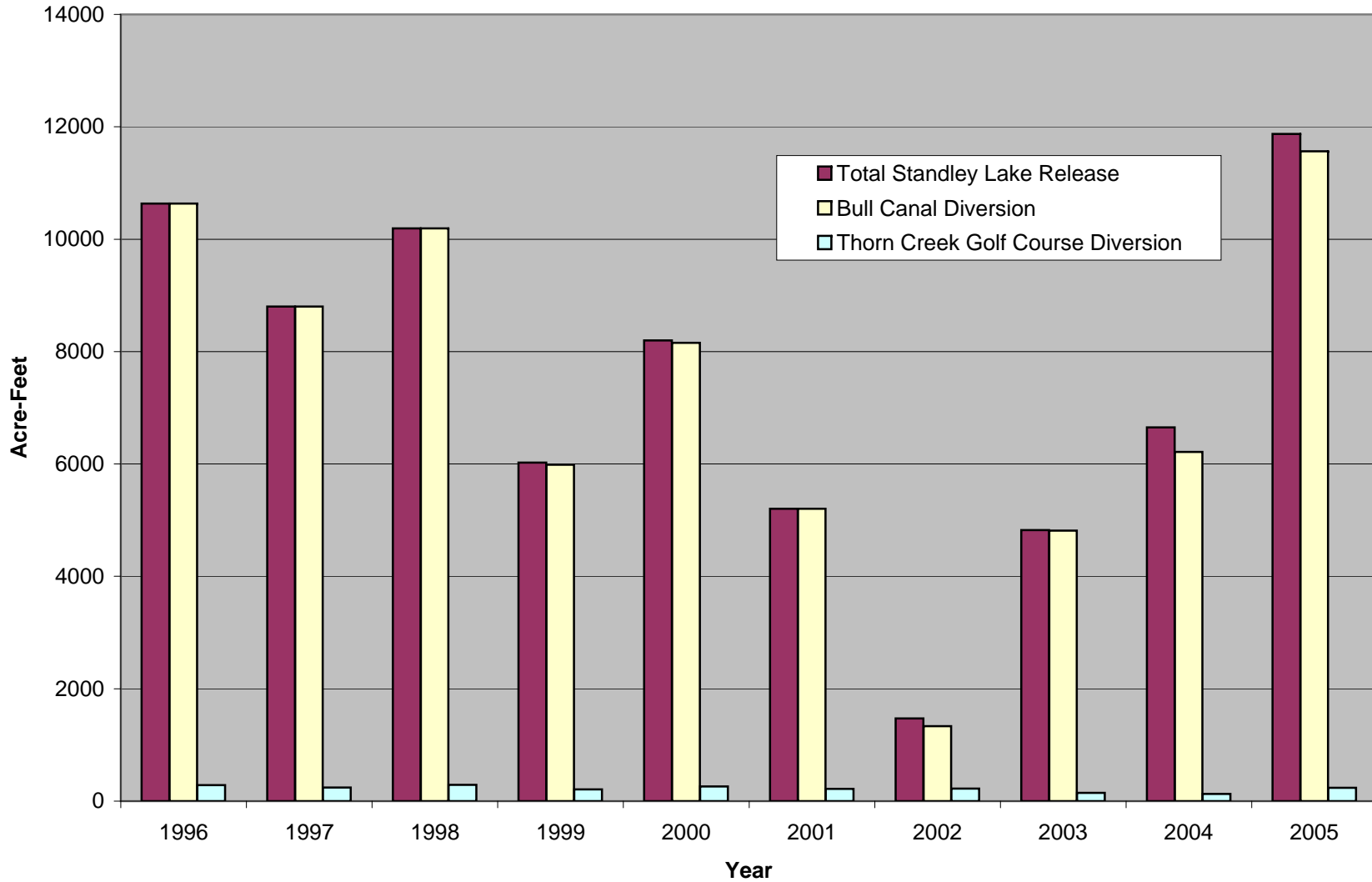


Figure 20. Big Dry Creek Releases and Diversions at Bull Canal and Thorn Creek Golf Course (1996-2005)



Attachment 1. Big Dry Creek 2007 Data

Station ID	Trip Start Date	ALKALINITY, TOTAL	BORON, TOTAL	CADMIUM, D	CARBON, TOTAL ORGANIC	CHLORIDE	CHLOROPHYLL A, CORRECTED FOR PHEOPHYTIN	CHLOROPHYLL A, UNCORRECTED FOR PHEOPHYTIN	CHROMIUM, D	Coliform, MF, Fecal	CONDUCTANCE, SPECIFIC	COPPER, D	CYANIDE	Demand, Bio_ Oxygen	DISSOLVED OXYGEN (DO)	FLOW
Detection Limit		1	0.05	0.00004	0.1	0.43	0.1	0.1	0.0001		10	0.00008	0.004	2	0	1
Units		mg/L	mg/L	mg/L	mg/L	mg/L	ug/L	ug/L	mg/L	#/100 mL	us/cm	mg/L	mg/L	mg/L	mg/L	cfs
bdc0.5	08-Feb-07	120	0.08		7.6	229	0.5	2.3		477	1387			3	12.5	
bdc0.5	15-Mar-07	268	0.21	*Non-detect	7.4	298	5.2	7.4	0.0016		2561	0.01300	*Non-detect	*Non-detect	9.6	
bdc0.5	12-Apr-07	230	0.17		6.0	245	6.5	7.2			2154			*Non-detect	11.5	
bdc0.5	10-May-07	58	*Non-detect		2.0	24	4.5	5.7			340			*Non-detect	9.9	11.4
bdc0.5	14-Jun-07	56	*Non-detect	*Non-detect	2.0	24	2.6	4.4	*Non-detect		300	0.01000	*Non-detect	*Non-detect	9.3	16.3
bdc0.5	12-Jul-07	76	*Non-detect		2.8	37	1.4	4			443			*Non-detect	9.1	2.1
bdc0.5	09-Aug-07	228	0.14		7.2	121	42.5	46.4			1422			3	6.9	
bdc0.5	13-Sep-07	59	*Non-detect	*Non-detect	2.1	24	3.1	6.9	0.0001		270	0.00450	*Non-detect	*Non-detect	8.8	11.5
bdc0.5	11-Oct-07	253	0.18		5.7	149	12.3	13			1635			*Non-detect	7.3	
bdc0.5	08-Nov-07	317	0.22		6.1	162	0.7	2.2			2042			*Non-detect	10.4	
bdc0.5	13-Dec-07	326	0.30	*Non-detect	6.2	859	9.8	11.5	0.0003		4149	0.00950	0.005	*Non-detect	13.4	
bdc1.0	10-Jan-07	144	0.24		6.4	566	3.3	4.1		35	2403			*Non-detect	11.6	
bdc1.0	08-Feb-07	118	0.11		8.6	214	3.3	5.2		21	1317			4	12.9	
bdc1.0	15-Mar-07	216	0.19	*Non-detect	8.4	330	17.9	20.9	0.0030		2209	0.00760	*Non-detect	3	9.4	
bdc1.0	12-Apr-07	192	0.12		6.3	224	4.2	6.6			1623			*Non-detect	11.0	
bdc1.0	10-May-07	84	*Non-detect		3.6	38	4.8	6.6			479			*Non-detect	9.5	11.2
bdc1.0	14-Jun-07	68	*Non-detect	*Non-detect	2.5	28	2.9	4.7	*Non-detect		369	0.01000	*Non-detect	*Non-detect	9.3	15.1
bdc1.0	12-Jul-07	112	0.08		6.6	64	5.6	8.2			737			2	7.6	1.1
bdc1.0	09-Aug-07	180	0.11		8.4	91	36.4	41.6			1079			3	5.6	
bdc1.0	13-Sep-07	65	*Non-detect	*Non-detect	2.4	28	4.2	8.5	0.0016		334	0.00600	*Non-detect	*Non-detect	8.8	10.5
bdc1.0	11-Oct-07	237	0.17		6.5	130	30.5	32.4			1540			3	7.7	
bdc1.0	08-Nov-07	258	0.18		6.7	155	8.2	8.2			1762			*Non-detect	9.7	
bdc1.5	08-Feb-07	134	0.14		8.4	232	1.9	4		101	1504			4	12.7	4.8
bdc1.5	15-Mar-07	244	0.23	*Non-detect	8.4	321	13.8	15.5	0.0030		2358	0.00520	*Non-detect	3	9.9	
bdc1.5	12-Apr-07	246	0.21		6.2	238	4.2	5.5			1986			*Non-detect	10.8	
bdc1.5	10-May-07	94	0.06		3.7	47	4.1	6.4			563			*Non-detect	9.3	13.8
bdc1.5	14-Jun-07	78	*Non-detect	*Non-detect	2.7	30	3.2	4.8	*Non-detect		430	0.00910	*Non-detect	2	8.9	17.3
bdc1.5	12-Jul-07	126	0.12		8.3	70	10.2	13.4			870			3	7.8	2.1
bdc1.5	09-Aug-07	212	0.16		8.2	97	48.9	54.5			1353			3	7.6	
bdc1.5	13-Sep-07	73	*Non-detect	*Non-detect	2.4	31	5.7	10.2	*Non-detect		401	0.00420	*Non-detect	*Non-detect	9.1	9.7
bdc1.5	11-Oct-07	291	0.31		6.6	148	28.2	29.8			1901			3	8.8	
bdc1.5	08-Nov-07	294	0.31		6.5	151	3.4	5.1			2088			*Non-detect	10.2	
bdc1.5	13-Dec-07	303	0.30	*Non-detect	6.5	716	3.5	4.3	0.0001		3496	0.00890	0.005	2	14.1	
bdc10.0	10-Jan-07	98	0.27		8.7	118	0.5	0.9		8	939			3	7.7	
bdc10.0	08-Feb-07	102	0.24		9.2	92	*Non-detect	0.2		12	904			2	8.3	
bdc10.0	15-Mar-07	110	0.29	0.00010	9.6	72	0.5	0.9	0.0040		926	0.00280	*Non-detect	3	7.6	
bdc10.0	12-Apr-07	96	0.28		10.2	80	0.5	1			872			5	7.9	
bdc10.0	10-May-07	138	0.33		10.1	83	0.5	1.2			1197			4	6.9	
bdc10.0	14-Jun-07	100	0.31	*Non-detect	9.6	80	1.2	2.2	*Non-detect		954	0.01600	*Non-detect	2	7.2	
bdc10.0	12-Jul-07	108	0.31		9.4	78	1.4	2.7			942			*Non-detect	6.9	
bdc10.0	09-Aug-07	109	0.26		9.3	66	*Non-detect	1.4			922			*Non-detect	6.5	
bdc10.0	13-Sep-07	85	*Non-detect	0.00010	10.3	75	1.9	1.3	0.0016		774	0.01900	*Non-detect	2	6.7	
bdc10.0	11-Oct-07	90	0.26		13.8	65	3.5	4.2			773			3	6.5	

Attachment 1. Big Dry Creek 2007 Data

Station ID	Trip Start Date	ALKALINITY, TOTAL	BORON, TOTAL	CADMIUM, D	CARBON, TOTAL ORGANIC	CHLORIDE	CHLOROPHYLL A, CORRECTED FOR PHEOPHYTIN	CHLOROPHYLL A, UNCORRECTED FOR PHEOPHYTIN	CHROMIUM, D	Coliform, MF, Fecal	CONDUCTANCE, SPECIFIC	COPPER, D	CYANIDE	Demand, Bio_ Oxygen	DISSOLVED OXYGEN (DO)	FLOW
Detection Limit		1	0.05	0.00004	0.1	0.43	0.1	0.1	0.0001		10	0.00008	0.004	2	0	1
Units		mg/L	mg/L	mg/L	mg/L	mg/L	ug/L	ug/L	mg/L	#/100 mL	us/cm	mg/L	mg/L	mg/L	mg/L	cfs
bdc10.0	08-Nov-07	94	0.27		12.8	54	6.1	4.6			827				2	6.4
bdc10.0	13-Dec-07	57	0.28	*Non-detect	11.5	121	*Non-detect	1.3	0.0006		907	0.03100	0.005		4	9.1
bdc11.0	10-Jan-07	107	0.30		8.9	143	1.5	3		52	1119				5	8.9
bdc11.0	08-Feb-07	96	0.26		8.8	128	2.1	3.2		4	1105				4	9.2
bdc11.0	15-Mar-07	117	0.28	0.00010	9.2	112	2.2	2.8	0.0027		1163	0.00650	*Non-detect		4	8.8
bdc11.0	12-Apr-07	120	0.27		8.8	109	2.4	4.5			859				6	8.3
bdc11.0	10-May-07	147	0.30		7.0	118	2	3.4			1301				3	7.6
bdc11.0	14-Jun-07	109	0.30	0.00006	7.5	106	1.1	2.3	*Non-detect		1147	0.02100	*Non-detect	*Non-detect		7.7
bdc11.0	12-Jul-07	113	0.29		7.4	99	2.7	4			1071				2	7.7
bdc11.0	09-Aug-07	116	0.24		8.5	98	1.5	2.4			1101				2	7.3
bdc11.0	13-Sep-07	149	0.28	0.00010	7.5	93	*Non-detect	1.4	0.0036		1017	0.01800	*Non-detect		10	6.9
bdc11.0	11-Oct-07	86	0.28		7.4	92	1.9	2.5			912				3	7.2
bdc11.0	08-Nov-07	88	0.28		7.5	89	*Non-detect	5.2			979			*Non-detect		7.9
bdc11.0	13-Dec-07	92	0.29	*Non-detect	7.5	126	2.4	3.5	0.0007		1057	0.03200	*Non-detect		4	8.3
bdc2.0	10-Jan-07	132	0.21		7.0	392	4	5.1		105	1869				2	10.6
bdc2.0	08-Feb-07	122	0.17		8.1	222	1.9	4.2		171	1386				4	12.6
bdc2.0	15-Mar-07	182	0.28	0.00010	8.5	157	4.8	6.1	0.0027		1515	0.00320	*Non-detect		2	8.4
bdc2.0	12-Apr-07	173	0.22		7.4	161	0.8	3.9			1471				3	8.8
bdc2.0	10-May-07	114	0.12		4.9	52	3.1	4.1			753			*Non-detect		9.2
bdc2.0	14-Jun-07	88	0.08	*Non-detect	3.8	41	6.4	8.8	*Non-detect		530	0.01600	*Non-detect	*Non-detect	8.6	22.9
bdc2.0	12-Jul-07	134	0.16		9.4	84	19.7	23.3			972				4	6.9
bdc2.0	09-Aug-07	175	0.19		8.4	84	31.9	35.7			1172				3	6.5
bdc2.0	13-Sep-07	80	0.08	*Non-detect	3.5	37	2.7	6.8	*Non-detect		500	0.00600	*Non-detect		2	8.5
bdc2.0	11-Oct-07	165	0.29		9.8	91	13.7	16.3			1214				7	7.3
bdc2.0	08-Nov-07	172	0.28		9.7	88	2.2	3.6			1287				3	8.5
bdc3.0	10-Jan-07	136	0.26		7.3	311	3.7	4.7		65	1682				3	9.8
bdc3.0	08-Feb-07	131	0.20		8.0	197	4.6	6.2		134	1410				4	11.2
bdc3.0	15-Mar-07	158	0.34	0.00010	8.5	131	5	6.5	0.0030		1423	0.00560	*Non-detect		3	9.8
bdc3.0	12-Apr-07	153	0.27		8.0	131	2.3	3.8			1327				5	9.5
bdc3.0	10-May-07	132	0.19		5.8	78	2.6	4.4			1012			*Non-detect		8.4
bdc3.0	14-Jun-07	113	0.20	*Non-detect	5.8	71	3.5	5.3	*Non-detect		957	0.01500	*Non-detect		2	8.5
bdc3.0	12-Jul-07	142	0.27		8.6	99	11.2	14.4			1240				3	7.8
bdc3.0	09-Aug-07	162	0.24		8.0	90	14.9	17.4			1247				3	8.0
bdc3.0	13-Sep-07	123	0.21	*Non-detect	5.3	72	2.7	4.4	0.0002		869	0.00860	*Non-detect		4	8.0
bdc3.0	11-Oct-07	158	0.31		8.4	92	10.5	13.2			1199				7	7.8
bdc3.0	08-Nov-07	148	0.29		8.3	93	3.5	5.7			1221				2	8.7
bdc3.0	13-Dec-07	143	0.31	*Non-detect	7.9	252	4.3	6	0.0010		1706	0.01700	*Non-detect		6	11.6
bdc4.0	10-Jan-07	155	0.25		7.2	414	7.8	9		78	2053				4	10.3
bdc4.0	08-Feb-07	132	0.18		8.6	242	2.7	4.1		198	1499				5	11.5
bdc4.0	15-Mar-07	170	0.30	0.00010	8.6	160	8.5	9.6	0.0045		1628	0.00530	*Non-detect		3	10.9
bdc4.0	12-Apr-07	168	0.28		7.6	139	1.8	3.4			1489				4	9.4
bdc4.0	10-May-07	144	0.19		5.7	80	1.7	2.8			1133				2	8.0
bdc4.0	14-Jun-07	128	0.18	0.00005	6.0	66	4	5	*Non-detect		994	0.01500	*Non-detect		2	8.6
bdc4.0	12-Jul-07	159	0.27		9.9	97	20.2	26.6			1364				5	8.5
bdc4.0	09-Aug-07	184	0.25		8.4	95	19.2	21.7			1382				3	8.0

Attachment 1. Big Dry Creek 2007 Data

Station ID	Trip Start Date	ALKALINITY, TOTAL	BORON, TOTAL	CADMIUM, D	CARBON, TOTAL ORGANIC	CHLORIDE	CHLOROPHYLL A, CORRECTED FOR PHEOPHYTIN	CHLOROPHYLL A, UNCORRECTED FOR PHEOPHYTIN	CHROMIUM, D	Coliform, MF, Fecal	CONDUCTANCE, SPECIFIC	COPPER, D	CYANIDE	Demand, Bio_ Oxygen	DISSOLVED OXYGEN (DO)	FLOW
Detection Limit		1	0.05	0.00004	0.1	0.43	0.1	0.1	0.0001		10	0.00008	0.004	2	0	1
Units		mg/L	mg/L	mg/L	mg/L	mg/L	ug/L	ug/L	mg/L	#/100 mL	us/cm	mg/L	mg/L	mg/L	mg/L	cfs
bdc4.0	13-Sep-07	132	0.20	*Non-detect	5.2	65	11.5	13.5	0.0002		1002	0.00930	*Non-detect	2	10.8	
bdc4.0	11-Oct-07	162	0.32		7.8	92	7.1	7.9			1290			5	8.9	
bdc4.0	08-Nov-07	160	0.31		7.8	98	3.2	8.2			1346		*Non-detect		11.9	
bdc4.0	13-Dec-07	153	0.31	*Non-detect	7.4	240	6	8.2	0.0001		1825	0.01500	*Non-detect	7	11.6	
bdc5.0	10-Jan-07	160	0.26		7.2	399	4.5	6.1		105	2029			4	10.7	
bdc5.0	08-Feb-07	134	0.19		8.2	251	6.5	9.9		248	1556			7	11.4	
bdc5.0	15-Mar-07	182	0.34	0.00010	7.7	152	10.3	13	0.0030		1590	0.00490	*Non-detect	3	10.3	7.0
bdc5.0	12-Apr-07	178	0.29		7.5	143	3	4.6			1547			5	9.4	
bdc5.0	10-May-07	158	0.23		5.4	91	2.5	2.9			1234		*Non-detect		7.8	
bdc5.0	14-Jun-07	154	0.23	0.00006	6.5	79	15.2	17.4	*Non-detect		1138	0.01600	*Non-detect	3	8.6	
bdc5.0	12-Jul-07	168	0.29		8.9	98	32.7	39.1			1355			4	8.0	
bdc5.0	09-Aug-07	195	0.27		7.8	98	16.2	21			1388			3	7.5	7.3
bdc5.0	13-Sep-07	161	0.24	0.00010	5.5	82	5.1	5.2	0.0001		1135	0.01200	*Non-detect	*Non-detect	10.0	
bdc5.0	11-Oct-07	178	0.34		7.3	87	11	12			1305			5	9.0	
bdc5.0	08-Nov-07	170	0.32		7.2	97	6.4	6.3			1380		*Non-detect		11.3	
bdc5.0	13-Dec-07	163	0.34	*Non-detect	7.0	249	9.5	12.8	0.0003		1936	0.01400	*Non-detect	7	13.0	
bdc6.0	10-Jan-07	168	0.27		7.3	398	7	11.8		218	2071			6	10.2	
bdc6.0	08-Feb-07	150	0.19		7.7	244	9	12.1		215	1563			8	11.8	
bdc6.0	15-Mar-07	196	0.34	0.00020	7.5	150	7.9	10.2	0.0038		1643	0.00590	*Non-detect	3	10.4	
bdc6.0	12-Apr-07	152	0.22		6.7	113	7.3	9			1167			9	9.6	52.2
bdc6.0	10-May-07	166	0.22		5.8	87	7.7	9.6			1198			4	8.0	50.0
bdc6.0	14-Jun-07	180	0.26	0.00008	6.7	89	10.9	13.3	*Non-detect		1216	0.01200	*Non-detect	2	8.7	
bdc6.0	12-Jul-07	198	0.27		7.8	89	36.9	41.8			1250			5	9.0	15.0
bdc6.0	09-Aug-07	178	0.23		6.5	81	17.2	21.4			1203			5	7.3	42.0
bdc6.0	13-Sep-07	177	0.27	0.00010	6.5	93	16.6	18	*Non-detect		1106	0.00850	*Non-detect	7	8.7	
bdc6.0	11-Oct-07	222	0.35		6.9	96	16.3	18.2			1374			5	9.2	25.0
bdc6.0	08-Nov-07	206	0.37		6.6	104	6.1	5.4			1508		*Non-detect		10.5	23.5
bdc6.0	13-Dec-07	224	0.36	*Non-detect	6.6	287	13.5	16.7	0.0005		2228	0.01500	*Non-detect	6	13.4	35.0

Attachment 1. Big Dry Creek 2007 Data

Station ID	Trip Start Date	LEAD, D	MANGANESE, D	MERCURY, TOT	MOLYBDEN UM	NICKEL	NITROGEN, NITRITE (NO2)	Nitrogen, NO3+NO2	Phosphorous, TPO4 (Hach)	PHOSPHORUS, ORTHOPHOSPHATE AS P	POTASSIUM	SELENIUM	SILVER	SODIUM	TDS
Detection Limit		0.001	0.0002	0.0002	0.00010	0.001	0.005	0.01	0.06	0.0025	0.03	0.0007	0.00004	1	0
Units		mg/L	mg/L	mg/L	mg/L	mg/L	mg/L	mg/L	mg/L	mg/L	mg/L	mg/L	mg/L	mg/L	mg/L
bdc0.5	08-Feb-07						0.035	1.19	0.19	0.1020	7.37	0.0032		188	838
bdc0.5	15-Mar-07	*Non-detect	1.2000	*Non-detect	0.00770	0.009	0.034	0.71	0.09	0.0055	4.72	0.0073	*Non-detect	364	1746
bdc0.5	12-Apr-07						0.013	0.79	0.09	0.0040	3.67	0.0070		302	1423
bdc0.5	10-May-07						0.005	0.31	0.09	0.0055	2.30	*Non-detect		25	212
bdc0.5	14-Jun-07	*Non-detect	0.0090	*Non-detect	0.00350	*Non-detect	0.009	0.13	0.10	0.0074	2.24	*Non-detect	*Non-detect	21	186
bdc0.5	12-Jul-07						0.004	0.37	0.10	0.0112	2.45	0.0008		37	268
bdc0.5	09-Aug-07						0.021	0.56	0.20	0.0157	4.76	0.0034		158	926
bdc0.5	13-Sep-07	*Non-detect	0.3500	*Non-detect	0.00340	*Non-detect	0.015	0.11	0.14	0.0137	1.94	*Non-detect	*Non-detect	17	154
bdc0.5	11-Oct-07						0.009	0.68	0.16	0.0061	4.57	0.0051		214	1142
bdc0.5	08-Nov-07						0.001	0.76	0.12	0.0032	4.09	0.0056		275	1380
bdc0.5	13-Dec-07	*Non-detect	0.3600	*Non-detect	0.00740	0.003	0.032	1.64	0.19	0.0068	4.80	0.0068	*Non-detect	755	2752
bdc1.0	10-Jan-07						0.030	1.12	0.21	0.0340	7.97	0.0040		381	1452
bdc1.0	08-Feb-07						0.037	0.91	0.30	0.1400	6.28	0.0036		169	790
bdc1.0	15-Mar-07	*Non-detect	0.5400	*Non-detect	0.00550	0.009	0.006	0.28	0.12	0.0025	4.81	0.0073	*Non-detect	290	1403
bdc1.0	12-Apr-07						0.008	0.32	0.12	0.0079	3.42	0.0055		209	1032
bdc1.0	10-May-07						0.004	0.26	0.13	0.0071	2.57	0.0010		42	291
bdc1.0	14-Jun-07	*Non-detect	0.0070	*Non-detect	0.00360	0.001	0.009	0.17	0.11	0.0105	2.36	*Non-detect	*Non-detect	30	228
bdc1.0	12-Jul-07						0.012	0.40	0.12	0.0223	3.94	0.0020		73	466
bdc1.0	09-Aug-07						0.008	0.21	0.20	0.0158	4.47	0.0027		116	676
bdc1.0	13-Sep-07	*Non-detect	0.1000	*Non-detect	0.00430	0.002	0.013	0.05	0.18	0.0127	2.10	*Non-detect	*Non-detect	24	201
bdc1.0	11-Oct-07						*Non-detect	0.12	0.25	0.0370	4.73	0.0049		199	1074
bdc1.0	08-Nov-07						*Non-detect	0.16	0.16	0.0052	4.11	0.0052		221	1184
bdc1.5	08-Feb-07						0.035	1.06	0.29	0.1270	6.13	0.0049		190	897
bdc1.5	15-Mar-07	*Non-detect	0.5600	*Non-detect	0.00530	0.009	0.008	0.81	0.11	0.0030	4.56	0.0100	*Non-detect	630	1561
bdc1.5	12-Apr-07						0.009	1.58	0.12	0.0102	3.35	0.0130		264	1313
bdc1.5	10-May-07						0.005	0.45	0.15	0.0098	2.63	0.0020		37	349
bdc1.5	14-Jun-07	*Non-detect	0.0096	*Non-detect	0.00340	0.001	0.008	0.28	0.18	0.0120	2.39	0.0013	*Non-detect	36	261
bdc1.5	12-Jul-07						0.019	0.85	0.14	0.0269	3.88	0.0044		90	557
bdc1.5	09-Aug-07						0.010	1.02	0.21	0.0104	4.17	0.0087		151	896
bdc1.5	13-Sep-07	*Non-detect	0.0400	*Non-detect	0.00340	*Non-detect	0.012	0.32	0.20	0.0123	2.12	0.0010	*Non-detect	29	240
bdc1.5	11-Oct-07						0.007	1.78	0.20	0.0087	4.47	0.0150		271	1380
bdc1.5	08-Nov-07						0.003	2.00	0.21	0.0048	3.86	0.0170		26	1460
bdc1.5	13-Dec-07	*Non-detect	0.2500	*Non-detect	0.00380	0.002	0.025	2.01	0.18	0.0101	4.50	0.0160	*Non-detect	673	2478
bdc10.0	10-Jan-07						0.030	13.00	2.51	2.0400	13.03	0.0044		115	628
bdc10.0	08-Feb-07						0.011	11.70	2.82	2.3600	12.12	0.0041		105	595
bdc10.0	15-Mar-07	*Non-detect	0.0100	*Non-detect	0.00870	0.005	0.013	12.10	2.05	1.6000	13.10	0.0044	*Non-detect	102	595
bdc10.0	12-Apr-07						0.028	14.10	1.76	1.2780	11.95	0.0042		97	572
bdc10.0	10-May-07						0.025	15.40	2.86	1.8200	12.25	0.0082		84	810
bdc10.0	14-Jun-07	*Non-detect	0.0082	*Non-detect	0.00340	0.002	0.020	15.80	2.00	1.7340	11.39	0.0043	0.00010	112	623
bdc10.0	12-Jul-07						0.028	12.90	0.31	0.1036	11.39	0.0037		108	582
bdc10.0	09-Aug-07						0.023	12.80	0.29	0.0887	11.44	0.0034		105	574
bdc10.0	13-Sep-07	*Non-detect	0.0230	*Non-detect	0.01000	0.002	0.501	17.70	3.89	3.2550	13.91	0.0036	0.00010	92	539
bdc10.0	11-Oct-07						0.660	18.30	4.57	4.1100	15.26	0.0034		95	500

Attachment 1. Big Dry Creek 2007 Data

Station ID	Trip Start Date	LEAD, D	MANGANESE, D	MERCURY, TOT	MOLYBDEN UM	NICKEL	NITROGEN, NITRITE (NO2)	Nitrogen, NO3+NO2	Phosphorous, TPO4 (Hach)	PHOSPHORUS, ORTHOPHOSPHATE AS P	POTASSIUM	SELENIUM	SILVER	SODIUM	TDS
Detection Limit		0.001	0.0002	0.0002	0.00010	0.001	0.005	0.01	0.06	0.0025	0.03	0.0007	0.00004	1	0
Units		mg/L	mg/L	mg/L	mg/L	mg/L	mg/L	mg/L	mg/L	mg/L	mg/L	mg/L	mg/L	mg/L	mg/L
bdc10.0	08-Nov-07						0.691	17.30	3.47	2.5500	15.62	0.0030		91	507
bdc10.0	13-Dec-07	*Non-detect	0.1300	*Non-detect	0.00350	0.001	0.622	18.80	0.53	0.0379	12.25	0.0018	*Non-detect	119	553
bdc11.0	10-Jan-07						0.601	12.60	4.21	3.5000	12.20	0.0033		134	734
bdc11.0	08-Feb-07						0.649	13.40	4.09	3.3300	11.65	0.0033		125	731
bdc11.0	15-Mar-07	*Non-detect	0.1300	*Non-detect	0.00470	0.006	0.516	14.00	3.41	1.9400	11.35	0.0046	*Non-detect	127	764
bdc11.0	12-Apr-07						1.150	11.60	2.92	2.2800	11.48	0.0036		122	724
bdc11.0	10-May-07						0.180	13.00	2.92	1.9700	9.99	0.0055		141	843
bdc11.0	14-Jun-07	*Non-detect	0.0980	*Non-detect	0.00420	0.003	0.214	16.40	4.35	3.8950	12.02	0.0039	*Non-detect	126	740
bdc11.0	12-Jul-07						0.227	13.60	3.58	3.0900	11.82	0.0029		115	665
bdc11.0	09-Aug-07						0.373	15.00	4.49	3.5100	11.00	0.0030		116	700
bdc11.0	13-Sep-07	*Non-detect	0.0770	*Non-detect	0.00750	0.003	0.042	3.77	2.82	2.0200	11.09	0.0027	*Non-detect	110	649
bdc11.0	11-Oct-07						0.114	13.90	2.87	2.5800	12.44	0.0020		108	607
bdc11.0	08-Nov-07						0.051	14.60	4.34	3.7600	12.33	0.0020		107	627
bdc11.0	13-Dec-07	*Non-detect	0.1300	*Non-detect	0.00350	0.001	0.041	11.30	5.40	3.4800	13.13	0.0019	*Non-detect	133	685
bdc2.0	10-Jan-07						0.029	5.20	1.00	0.7100	8.21	0.0047		288	1163
bdc2.0	08-Feb-07						0.029	3.49	0.87	1.2300	7.28	0.0044		181	841
bdc2.0	15-Mar-07	*Non-detect	0.1800	*Non-detect	0.00810	0.007	0.026	8.20	2.06	1.7500	9.75	0.0079	*Non-detect	190	981
bdc2.0	12-Apr-07						0.028	6.80	0.85	0.6000	7.24	0.0070		181	940
bdc2.0	10-May-07						0.017	3.44	0.74	0.4750	4.47	0.0033		75	461
bdc2.0	14-Jun-07	*Non-detect	0.0078	*Non-detect	0.00350	0.001	0.012	1.56	0.45	0.1760	3.28	0.0018	*Non-detect	52	332
bdc2.0	12-Jul-07						0.025	2.49	0.34	0.0689	5.15	0.0046		108	613
bdc2.0	09-Aug-07						0.030	5.15	0.35	0.0764	6.11	0.0061		128	766
bdc2.0	13-Sep-07	*Non-detect	0.0130	*Non-detect	0.00380	0.001	0.087	2.88	0.83	0.4500	3.69	0.0020	*Non-detect	44	306
bdc2.0	11-Oct-07						0.618	13.20	3.18	2.3000	11.37	0.0079		153	815
bdc2.0	08-Nov-07						0.491	10.90	2.48	1.9320	11.28	0.0076		58	817
bdc3.0	10-Jan-07						0.230	7.40	2.29	1.5100	9.25	0.0051		247	1087
bdc3.0	08-Feb-07						0.188	5.55	1.88	1.2400	8.17	0.0049		179	883
bdc3.0	15-Mar-07	*Non-detect	0.1600	*Non-detect	0.00640	0.007	0.285	10.90	2.80	2.2800	10.40	0.0071	*Non-detect	171	930
bdc3.0	12-Apr-07						0.559	9.70	2.00	1.3500	9.30	0.0060		157	869
bdc3.0	10-May-07						0.082	6.50	1.39	1.0200	6.04	0.0043		108	654
bdc3.0	14-Jun-07	*Non-detect	0.0470	*Non-detect	0.00380	0.002	0.101	7.75	2.19	1.7900	6.62	0.0041	*Non-detect	107	628
bdc3.0	12-Jul-07						0.174	7.15	1.92	1.5100	7.99	0.0045		142	802
bdc3.0	09-Aug-07						0.175	9.00	2.22	1.8420	7.73	0.0063		137	812
bdc3.0	13-Sep-07	*Non-detect	0.0550	*Non-detect	0.00380	0.002	0.048	3.22	1.67	0.9960	6.67	0.0039	*Non-detect	91	548
bdc3.0	11-Oct-07						0.395	12.80	2.81	2.0000	11.01	0.0069		154	815
bdc3.0	08-Nov-07						0.258	12.50	3.31	2.5200	11.51	0.0059		140	795
bdc3.0	13-Dec-07	*Non-detect	0.1500	*Non-detect	0.00390	0.002	0.253	11.40	2.90	1.5040	10.37	0.0062	*Non-detect	245	1117
bdc4.0	10-Jan-07						0.122	5.50	1.23	0.8750	8.34	0.0063		313	1323
bdc4.0	08-Feb-07						0.087	3.74	1.07	0.6640	7.25	0.0048		206	964
bdc4.0	15-Mar-07	*Non-detect	0.1200	*Non-detect	0.00730	0.009	0.161	9.90	1.69	1.5000	8.84	0.0082	*Non-detect	202	1085
bdc4.0	12-Apr-07						0.414	9.35	1.43	1.1400	8.54	0.0074		184	994
bdc4.0	10-May-07						0.084	4.80	1.06	0.7150	5.34	0.0050		127	752
bdc4.0	14-Jun-07	*Non-detect	0.0130	*Non-detect	0.00430	0.002	0.037	3.93	0.82	0.6750	4.98	0.0045	*Non-detect	112	652
bdc4.0	12-Jul-07						0.081	4.46	0.86	0.6880	7.09	0.0056		163	908
bdc4.0	09-Aug-07						0.068	6.35	1.25	0.9520	7.18	0.0065		160	900

Attachment 1. Big Dry Creek 2007 Data

Station ID	Trip Start Date	LEAD, D	MANGANESE, D	MERCURY, TOT	MOLYBDEN UM	NICKEL	NITROGEN, NITRITE (NO2)	Nitrogen, NO3+NO2	Phosphorous, TPO4 (Hach)	PHOSPHORUS, ORTHOPHOSPHATE AS P	POTASSIUM	SELENIUM	SILVER	SODIUM	TDS
Detection Limit		0.001	0.0002	0.0002	0.00010	0.001	0.005	0.01	0.06	0.0025	0.03	0.0007	0.00004	1	0
Units		mg/L	mg/L	mg/L	mg/L	mg/L	mg/L	mg/L	mg/L	mg/L	mg/L	mg/L	mg/L	mg/L	mg/L
bdc4.0	13-Sep-07	*Non-detect	0.0170	*Non-detect	0.00460	0.002	0.040	3.48	1.05	0.7060	4.98	0.0056	*Non-detect	108	656
bdc4.0	11-Oct-07						0.357	11.50	1.83	1.6300	9.88	0.0079		168	883
bdc4.0	08-Nov-07						0.265	11.40	2.07	1.6800	10.00	0.0072		160	885
bdc4.0	13-Dec-07	*Non-detect	0.1500	*Non-detect	0.00390	0.002	0.253	11.20	2.21	1.8300	10.28	0.0069	*Non-detect	259	1214
bdc5.0	10-Jan-07						0.163	6.05	1.37	0.9920	8.49	0.0064		304	1325
bdc5.0	08-Feb-07						0.093	3.72	0.99	0.6600	7.11	0.0048		210	966
bdc5.0	15-Mar-07	*Non-detect	0.0400	*Non-detect	0.00750	0.008	0.086	9.20	1.32	1.0900	8.49	0.0081	*Non-detect	203	1079
bdc5.0	12-Apr-07						0.313	9.30	1.29	1.1400	8.34	0.0076		190	1029
bdc5.0	10-May-07						0.048	5.65	1.02	0.8180	5.64	0.0057		141	822
bdc5.0	14-Jun-07	*Non-detect	0.0140	*Non-detect	0.00430	0.003	0.022	3.83	1.00	0.7130	5.64	0.0049	*Non-detect	131	750
bdc5.0	12-Jul-07						0.077	4.38	0.79	0.6110	6.65	0.0057		159	898
bdc5.0	09-Aug-07						0.035	6.30	1.29	0.8850	7.46	0.0066		161	919
bdc5.0	13-Sep-07	*Non-detect	0.0260	*Non-detect	0.00500	0.003	0.023	4.57	1.30	0.9650	5.71	0.0054	*Non-detect	122	744
bdc5.0	11-Oct-07						0.287	10.40	1.53	1.1600	9.63	0.0077		169	899
bdc5.0	08-Nov-07						0.171	10.60	1.35	1.1200	9.39	0.0070		167	924
bdc5.0	13-Dec-07	*Non-detect	0.1800	*Non-detect	0.00430	0.002	0.171	11.50	1.96	1.5300	9.55	0.0072	*Non-detect	259	1294
bdc6.0	10-Jan-07						0.147	5.80	1.30	0.8090	8.42	0.0059		310	1346
bdc6.0	08-Feb-07						0.097	3.94	1.32	0.6640	7.30	0.0044		212	984
bdc6.0	15-Mar-07	*Non-detect	0.0230	*Non-detect	0.00830	0.009	0.030	8.15	1.12	0.8580	8.05	0.0079	*Non-detect	210	1120
bdc6.0	12-Apr-07						0.178	5.95	1.36	0.9350	7.55	0.0046		135	768
bdc6.0	10-May-07						0.039	4.42	0.82	0.5620	5.52	0.0047		132	803
bdc6.0	14-Jun-07	*Non-detect	0.0140	*Non-detect	0.00470	0.003	0.021	4.02	0.95	0.6500	5.94	0.0044	*Non-detect	140	783
bdc6.0	12-Jul-07						0.114	3.18	0.76	0.4120	6.13	0.0034		141	803
bdc6.0	09-Aug-07						0.062	5.85	1.17	0.8060	7.16	0.0045		134	783
bdc6.0	13-Sep-07	*Non-detect	0.0210	*Non-detect	0.00600	0.003	0.246	4.48	1.97	1.5100	8.42	0.0033	*Non-detect	119	711
bdc6.0	11-Oct-07						0.207	7.80	1.40	1.0500	9.11	0.0060		177	953
bdc6.0	08-Nov-07						0.119	9.40	1.14	0.8470	8.47	0.0062		182	999
bdc6.0	13-Dec-07	*Non-detect	0.1200	*Non-detect	0.00450	0.003	0.204	7.80	1.55	1.0800	8.70	0.0092	*Non-detect	305	1526

Attachment 1. Big Dry Creek 2007 Data

Station ID	Trip Start Date	TSS	SULFATE	TURBIDITY	ZINC, D	ARSENIC, D	ARSENIC, Total Rec	IRON, D	IRON, Total Rec	E. coli	Nitrogen, Ammonia	pH	TEMPERATURE, WATER	Calculated Unionized Ammonia	CALCIUM	MAGNESIUM	Calculated Hardness
Detection Limit		2	0.4/2.6		0.001	0.0002	0.0002	0.006	0.08		0.01				1	0.3	
Units		mg/L	mg/L	NTU	mg/L	mg/L	mg/L	mg/L	mg/L	#/100 mL	mg/L	SU	C	mg/L	mg/L	mg/L	mg/L
bdc0.5	08-Feb-07	6	207	20.1				0.048	0.346	260	0.21	7.85	0.06	0.0013	82	20.1	287
bdc0.5	15-Mar-07	8	655	9.6	0.0090	0.0009	0.0009	0.013	0.229	33	0.12	7.39	6.48	0.0004	170	56.1	655
bdc0.5	12-Apr-07	6	553	6.1				0.015	0.068	27	0.02	7.85	4.01	0.0002	122	52.1	519
bdc0.5	10-May-07	12	58	7.2				0.011	0.401	93	0.03	7.64	9.65	0.0002	43	7.6	139
bdc0.5	14-Jun-07	14	51	13.9	0.0010	*Non-detect	0.0010	0.013	0.242	435	0.05	8.00	11.8	0.0010	55	6.7	165
bdc0.5	12-Jul-07	4	80	7.7				0.030	0.320	517	0.01	7.27	15.79	0.0001	47	10.0	158
bdc0.5	09-Aug-07	17	297	10.4				0.012	0.369	1120	0.09	7.27	18.6	0.0006	123	31.0	435
bdc0.5	13-Sep-07	24	45	17.9	0.0010	0.0005	0.0008	0.022	0.580	517	0.04	7.60	16.5	0.0005	33.6	5.9	108
bdc0.5	11-Oct-07	3	451	2.8				0.014	0.026	866	0.02	7.11	8.99	0.0000	133	42.5	507
bdc0.5	08-Nov-07	2	534	2.3				0.019	0.031	126	0.02	6.59	5.75	0.0000	166	50.2	621
bdc0.5	13-Dec-07	18	502	10.0	0.0120	0.0007	0.0009	0.029	0.334	54	0.09	6.95	-0.04	0.0001	172	73.1	730
bdc1.0	10-Jan-07	24	240	19.4				0.014	0.756	20	0.18	7.60	0.06	0.0006	128	33.5	457
bdc1.0	08-Feb-07	46	181	116.0				0.057	1.310	60	0.26	7.99	0.01	0.0022	79	22.6	290
bdc1.0	15-Mar-07	28	430	29.0	0.0040	0.0010	0.0010	0.014	0.756	64	0.03	7.98	7.56	0.0004	142	48.1	552
bdc1.0	12-Apr-07	26	316	59.7				0.012	0.894	54	0.02	8.17	6.17	0.0004	113	35.7	429
bdc1.0	10-May-07	31	83	21.0				0.018	0.924	108	0.02	7.92	10.76	0.0003	57	10.5	185
bdc1.0	14-Jun-07	46	62	39.4	*Non-detect	*Non-detect	0.0017	0.024	0.464	1300	0.03	8.08	12.3	0.0008	49	8.3	156
bdc1.0	12-Jul-07	14	153	11.3				0.022	0.471	1986	0.04	7.41	18.67	0.0004	72	15.8	245
bdc1.0	09-Aug-07	31	226	21.5				0.015	0.826	921	0.04	7.59	20.48	0.0006	104	24.2	359
bdc1.0	13-Sep-07	37	62	29.6	0.0020	0.0007	0.0010	0.031	1.043	214	0.02	7.66	15.3	0.0002	33.6	7.3	114
bdc1.0	11-Oct-07	22	431	98.5				0.013	2.364	488	0.03	7.37	11.37	0.0001	127	39.1	478
bdc1.0	08-Nov-07	32	502	29.3				0.020	0.628	49	0.01	6.10	6.74	0.0000	178	41.8	616
bdc1.5	08-Feb-07	48	225	79.0				0.048	1.281	88	0.26	7.92	0.36	0.0019	88	25.1	323
bdc1.5	15-Mar-07	20	521	18.6	0.0040	0.0010	0.0010	0.010	0.549	236	0.06	8.00	7.22	0.0009	165	50.1	618
bdc1.5	12-Apr-07	18	458	20.8				0.012	0.311	56	0.03	8.13	6.85	0.0006	132	46.4	520
bdc1.5	10-May-07	42	107	27.8				0.019	1.170	365	0.03	7.88	11.19	0.0004	72	12.6	231
bdc1.5	14-Jun-07	52	80	51.8	*Non-detect	*Non-detect	0.0017	0.028	0.621	1300	0.03	8.08	12.64	0.0008	52	9.8	170
bdc1.5	12-Jul-07	34	203	27.2				0.017	1.036	1986	0.07	7.58	18.72	0.0009	74	19.7	266
bdc1.5	09-Aug-07	19	305	14.8				0.013	0.504	411	0.04	7.67	19.33	0.0007	110	32.1	407
bdc1.5	13-Sep-07	58	76	38.5	0.0010	0.0006	0.0010	0.022	1.470	345	0.02	7.70	15.4	0.0003	46	9.0	152
bdc1.5	11-Oct-07	9	563	7.3				0.013	0.166	276	0.02	7.44	10.7	0.0001	156	52.4	605
bdc1.5	08-Nov-07	9	628	9.4				0.016	0.203	84	0.05	7.07	7.4	0.0001	186	54.4	688
bdc1.5	13-Dec-07	17	632	18.3	0.0026	0.0008	0.0010	0.024	0.410	88	0.15	7.20	-0.07	0.0002	184	57.1	694
bdc10.0	10-Jan-07	4	164	1.2				0.055	0.137	10	0.03	7.33	13.28	0.0001	89	19.1	301
bdc10.0	08-Feb-07	4	150	4.4				0.060	0.107	2	0.03	7.21	12.58	0.0001	67	17.9	241
bdc10.0	15-Mar-07	5	165	3.3	0.0540	0.0002	0.0002	0.066	0.163	3	0.04	7.78	13.42	0.0006	75	19.0	265
bdc10.0	12-Apr-07	8	163	7.3				0.069	0.157	23	0.07	8.03	13.49	0.0017	68	17.3	241
bdc10.0	10-May-07	6	270	3.4				0.035	0.077	15	0.06	7.40	16.24	0.0004	99	29.7	369
bdc10.0	14-Jun-07	3	187	1.7	0.0450	*Non-detect	0.0019	0.051	0.083	11	0.04	7.72	18.7	0.0007	68	20.5	254
bdc10.0	12-Jul-07	2	188	1.4				0.058	0.076	10	0.06	7.68	20.68	0.0011	66	19.6	245
bdc10.0	09-Aug-07	*Non-detect	176	1.0				0.059	0.084	13	0.06	8.01	21.85	0.0026	70	18.5	251
bdc10.0	13-Sep-07	3	143	2.4	0.0510	0.0008	0.0006	0.063	0.111	20	0.42	7.48	20.68	0.0051	64.4	15.9	226
bdc10.0	11-Oct-07	5	121	3.6				0.082	0.104	133	4.93	7.80	19.69	0.1142	54	14.4	194

Attachment 1. Big Dry Creek 2007 Data

Station ID	Trip Start Date	TSS	SULFATE	TURBIDITY	ZINC, D	ARSENIC, D	ARSENIC, Total Rec	IRON, D	IRON, Total Rec	E. coli	Nitrogen, Ammonia	pH	TEMPERATURE, WATER	Calculated Unionized Ammonia	CALCIUM	MAGNESIUM	Calculated Hardness
Detection Limit		2	0.4/2.6		0.001	0.0002	0.0002	0.006	0.08		0.01				1	0.3	
Units		mg/L	mg/L	NTU	mg/L	mg/L	mg/L	mg/L	mg/L	#/100 mL	mg/L	SU	C	mg/L	mg/L	mg/L	mg/L
bdc10.0	08-Nov-07	5	114	3.6				0.095	0.110	23	7.14	7.69	18.17	0.1154	86	13.7	271
bdc10.0	13-Dec-07	5	98	3.6	0.0600	0.0004	0.0004	0.105	0.170	21	0.94	7.73	14.66	0.0129	55	14.0	195
bdc11.0	10-Jan-07	12	216	3.6				0.028	0.144	59	1.62	7.63	11.83	0.0143	108	20.5	354
bdc11.0	08-Feb-07	7	214	6.2				0.029	0.082	11	1.60	7.35	10.97	0.0070	88	20.3	303
bdc11.0	15-Mar-07	5	244	3.8	0.0540	0.0004	0.0004	0.020	0.071	3	1.28	7.70	12.31	0.0138	100	23.4	346
bdc11.0	12-Apr-07	4	228	3.5				0.029	0.046	30	2.46	7.84	13.25	0.0389	96	21.1	327
bdc11.0	10-May-07	3	278	1.9				0.015	0.052	45	0.15	7.48	16.82	0.0014	115	29.4	408
bdc11.0	14-Jun-07	3	239	2.9	0.0330	*Non-detect	0.0010	0.017	0.054	96	0.29	7.60	18.95	0.0040	108	23.2	365
bdc11.0	12-Jul-07	*Non-detect	158	1.8				0.030	0.057	135	1.78	7.80	20.56	0.0439	91	21.0	313
bdc11.0	09-Aug-07	*Non-detect	214	1.2				0.026	0.060	96	0.44	7.89	21.68	0.0144	90	21.1	312
bdc11.0	13-Sep-07	11	208	4.3	0.0450	0.0010	0.0007	0.024	0.113	1553	0.15	7.31	21.66	0.0013	83.6	19.1	287
bdc11.0	11-Oct-07	2	184	2.8				0.020	0.029	144	0.27	7.92	18.91	0.0077	70	17.8	248
bdc11.0	08-Nov-07	*Non-detect	191	2.4				0.019	0.004	131	0.15	7.72	17.06	0.0024	54	18.2	210
bdc11.0	13-Dec-07	10	184	5.2	0.0560	0.0004	0.0005	0.021	0.156		0.31	7.63	12.59	0.0029	78	17.7	268
bdc2.0	10-Jan-07	18	231	14.1				0.019	0.602	133	0.12	7.52	4.23	0.0005	123	28.9	426
bdc2.0	08-Feb-07	36	207	58.0				0.035	1.072	178	0.22	7.79	3.04	0.0015	97	24.1	341
bdc2.0	15-Mar-07	13	323	10.9	0.0360	0.0008	0.0008	0.036	0.355	114	0.10	7.68	10.73	0.0009	123	32.6	441
bdc2.0	12-Apr-07	18	315	12.8				0.029	0.352	64	0.10	7.88	9.5	0.0013	106	31.4	394
bdc2.0	10-May-07	39	153	28.0				0.015	1.166	96	0.05	7.79	13.65	0.0007	87	17.0	287
bdc2.0	14-Jun-07	77	105	76.0	0.0042	0.0002	0.0020	0.033	1.092	1414	0.04	7.99	14.07	0.0009	67	12.2	217
bdc2.0	12-Jul-07	27	221	23.8				0.029	0.800	2419	0.07	7.74	19.45	0.0014	74	22.0	275
bdc2.0	09-Aug-07	23	270	16.8				0.023	0.653	1203	0.08	7.80	20.14	0.0019	112	26.5	388
bdc2.0	13-Sep-07	46	93	34.2	0.0078	0.0007	0.0010	0.020	1.329	308	0.09	7.65	16.67	0.0012	49.2	11.0	168
bdc2.0	11-Oct-07	24	301	13.8				0.049	0.445	579	3.39	7.60	15.81	0.0375	109	29.0	391
bdc2.0	08-Nov-07	18	288	6.1				0.055	0.219	345	5.97	7.41	13.41	0.0359	110	28.3	391
bdc3.0	10-Jan-07	39	273	10.6				0.018	0.746	68	0.60	7.58	6.98	0.0033	136	28.7	458
bdc3.0	08-Feb-07	68	248	79.0				0.028	1.092	148	0.53	7.75	4.97	0.0037	102	26.4	363
bdc3.0	15-Mar-07	10	320	9.2	0.0430	0.0008	0.0008	0.024	0.233	57	0.64	7.74	11.03	0.0069	103	25.7	363
bdc3.0	12-Apr-07	30	300	12.9				0.024	0.154	43	1.18	7.70	11.69	0.0121	102	28.0	370
bdc3.0	10-May-07	30	233	20.6				0.011	0.845	96	0.08	7.72	15.75	0.0012	106	23.6	362
bdc3.0	14-Jun-07	52	226	16.0	0.0150	0.0003	0.0019	0.009	0.243	687	0.13	7.84	18.41	0.0030	88	22.2	311
bdc3.0	12-Jul-07	18	316	13.1				0.039	0.442	1414	0.84	7.81	20.81	0.0216	99	29.6	369
bdc3.0	09-Aug-07	15	293	11.0				0.016	0.410	308	0.18	7.86	22.24	0.0057	114	27.9	399
bdc3.0	13-Sep-07	21	196	19.1	0.0220	0.0007	0.0010	0.015	0.374	308	0.10	7.51	19.8	0.0012	94	19.0	313
bdc3.0	11-Oct-07	49	312	28.8				0.032	1.008	1120	1.71	7.65	16.53	0.0224	103	29.2	377
bdc3.0	08-Nov-07	16	272	14.6				0.030	0.177	365	2.88	7.63	14.61	0.0313	108	26.7	379
bdc3.0	13-Dec-07	27	299	23.9	0.0330	0.0005	0.0008	0.036	0.412	248	0.59	7.49	8.34	0.0029	119	29.8	420
bdc4.0	10-Jan-07	62	318	21.4				0.013	1.201	96	0.37	7.79	4.95	0.0028	122	35.3	450
bdc4.0	08-Feb-07	170	264	152.0				0.040	2.105	184	0.31	8.01	2.97	0.0034	82	27.8	319
bdc4.0	15-Mar-07	12	395	11.8	0.0400	0.0007	0.0007	0.016	0.278	105	0.18	8.02	7.84	0.0029	147	35.5	513
bdc4.0	12-Apr-07	18	373	7.1				0.018	0.152	26	0.73	8.00	9.53	0.0126	103	30.1	381
bdc4.0	10-May-07	66	297	44.0				0.009	1.631	79	0.09	7.96	16.84	0.0024	114	26.7	395
bdc4.0	14-Jun-07	28	260	22.1	0.0076	0.0007	0.0020	0.008	0.308	727	0.02	8.18	20.45	0.0011	92	23.5	326
bdc4.0	12-Jul-07	39	375	26.6				0.020	0.874	1733	0.19	7.92	21.34	0.0065	104	30.3	384
bdc4.0	09-Aug-07	54	364	28.8				0.013	1.230	387	0.05	7.98	22.48	0.0021	104	31.4	389

Attachment 1. Big Dry Creek 2007 Data

Station ID	Trip Start Date	TSS	SULFATE	TURBIDITY	ZINC, D	ARSENIC, D	ARSENIC, Total Rec	IRON, D	IRON, Total Rec	E. coli	Nitrogen, Ammonia	pH	TEMPERATURE, WATER	Calculated Unionized Ammonia	CALCIUM	MAGNESIUM	Calculated Hardness
Detection Limit		2	0.4/2.6		0.001	0.0002	0.0002	0.006	0.08		0.01				1	0.3	
Units		mg/L	mg/L	NTU	mg/L	mg/L	mg/L	mg/L	mg/L	#/100 mL	mg/L	SU	C	mg/L	mg/L	mg/L	mg/L
bdc4.0	13-Sep-07	23	276	18.3	0.0100	0.0010	0.0010	0.011	0.400	387	*Non-detect	7.82	18.36	*Non-detect	98.4	23.5	342
bdc4.0	11-Oct-07	26	357	17.5				0.018	0.658	488	0.75	7.78	14.86	0.0117	111	31.8	408
bdc4.0	08-Nov-07	8	370	8.1				0.027	0.150	225	0.77	7.74	12.11	0.0089	111	30.6	403
bdc4.0	13-Dec-07	37	326	31.3	0.0300	0.0007	0.0009	0.031	0.515	291	0.47	7.51	4.89	0.0019	120	33.4	437
bdc5.0	10-Jan-07	90	312	27.3				0.016	2.535	126	0.54	7.96	4.38	0.0058	130	34.6	467
bdc5.0	08-Feb-07	320	251	248.0				0.050	3.697	192	0.31	8.06	2.85	0.0038	95	27.6	351
bdc5.0	15-Mar-07	27	395	26.9	0.0370	0.0008	0.0008	0.012	0.519	70	0.02	8.13	8.24	0.0004	115	35.9	435
bdc5.0	12-Apr-07	43	391	26.7				0.013	0.211	11	0.44	8.07	9.2	0.0087	122	34.7	447
bdc5.0	10-May-07	68	328	58.5				0.008	1.674	79	0.03	8.07	17.27	0.0011	122	29.7	427
bdc5.0	14-Jun-07	27	299	26.0	0.0078	0.0008	0.0020	0.005	0.260	687	0.01	8.30	21.68	0.0008	110	27.0	386
bdc5.0	12-Jul-07	55	356	40.0				0.035	1.225	2419	0.15	8.02	21.77	0.0066	102	31.8	385
bdc5.0	09-Aug-07	110	362	54.6				0.016	2.729	326	0.05	8.09	22.88	0.0028	106	31.7	395
bdc5.0	13-Sep-07	17	298	14.7	0.0120	0.0020	0.0015	0.010	0.410	222	*Non-detect	8.01	19.13	*Non-detect	115.6	27.1	400
bdc5.0	11-Oct-07	34	354	22.5				0.014	0.810	866	0.67	7.82	13.89	0.0106	112	32.8	414
bdc5.0	08-Nov-07	10	350	11.4				0.020	0.186	155	0.16	7.83	10.7	0.0021	121	32.6	436
bdc5.0	13-Dec-07	56	382	47.3	0.0290	0.0007	0.0010	0.027	1.420	156	0.30	7.57	2.01	0.0011	116	36.3	439
bdc6.0	10-Jan-07	160	327	36.3				0.017	2.423	155	0.52	7.84	3.51	0.0040	139	35.6	493
bdc6.0	08-Feb-07	470	256	338.0				0.050	7.268	126	0.27	8.01	3.2	0.0030	94	28.0	350
bdc6.0	15-Mar-07	46	416	37.2	0.0330	0.0010	0.0010	0.007	0.643	79	0.01	8.16	8.59	0.0002	134	38.4	492
bdc6.0	12-Apr-07	200	267	113.0				0.017	0.775	548	0.84	8.15	8.79	0.0193	98	24.9	347
bdc6.0	10-May-07	96	311	64.0				0.008	2.415	1733	0.04	8.09	16.55	0.0014	107	28.9	386
bdc6.0	14-Jun-07	50	309	44.3	0.0074	0.0010	0.0028	0.008	0.487	548	0.01	8.26	20.46	0.0007	109	30.3	397
bdc6.0	12-Jul-07	32	295	24.9				0.022	0.748	2419	0.10	8.06	20.8	0.0045	121	30.2	426
bdc6.0	09-Aug-07	150	286	82.3				0.015	3.659	488	0.06	8.20	22.38	0.0041	100	27.1	361
bdc6.0	13-Sep-07	44	246	29.1	0.0130	0.0017	0.0018	0.014	0.596	365	0.83	7.91	18.84	0.0231	94.4	23.7	333
bdc6.0	11-Oct-07	38	351	22.8				0.013	0.896	649	0.72	7.79	13.39	0.0103	110	35.7	422
bdc6.0	08-Nov-07	22	390	19.3				0.016	0.239	91	0.27	7.67	9.44	0.0022	141	37.6	507
bdc6.0	13-Dec-07	65	444	53.0	0.0200	0.0010	0.0010	0.019	0.779	261	0.32	7.55	0.77	0.0010	136	45.2	526